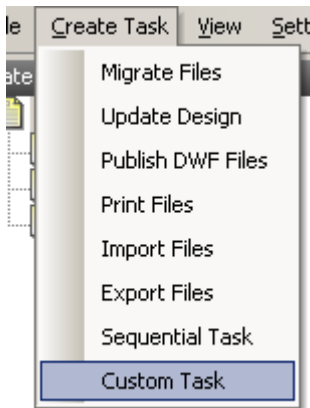


Autodesk Inventor R10 comes up with a Task Scheduler Utility. To access, locate Autodesk Inventor 10 in your Start Programs list. Go to **Autodesk Inventor 10**→**Tools**→**Task Scheduler**.

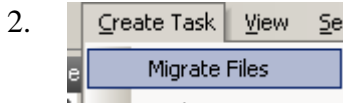


The Task Scheduler acts as a batch processor to migrate files, publish to DWF, plot, import files from other software, export files, update Inventor files, or even use a Visual Basic program to modify files.

Note: Once you migrate files, you can not save them down to the previous release.

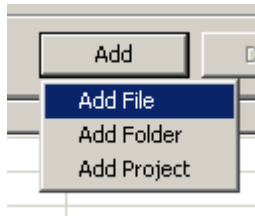
Using the Task Scheduler to Migrate Files

1. Launch the Task Scheduler.

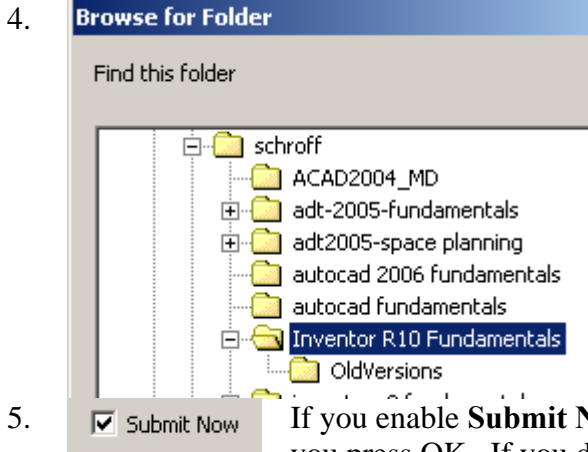


Go to **Create Task**→**Migrate Files**.

3. Select the **Add** button to add a folder, files or project to the task. If you add a project, all the files associated with the project will be added to the task list.



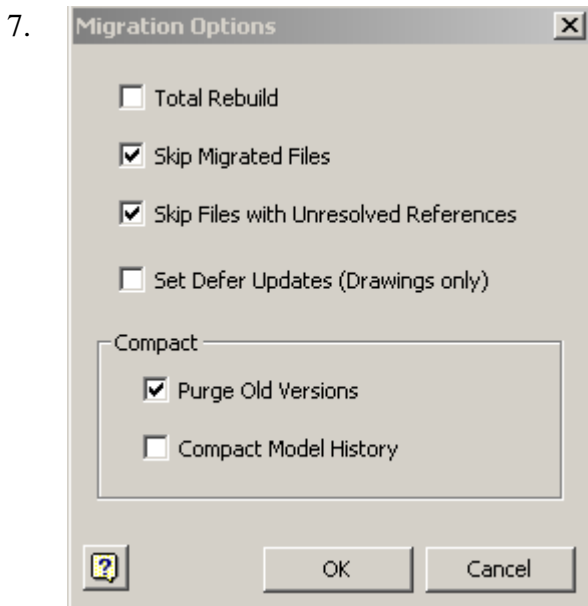
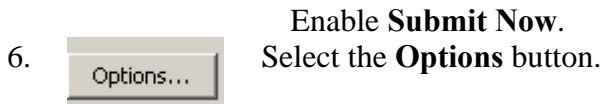
Select **Add Folder**.



Locate the folder with the files you want to migrate to the current release of Inventor.

Press **OK**.

5. If you enable **Submit Now**, the task will be processed as soon as you press OK. If you do not enable Submit Now, you can set the date and time for the task to be processed.

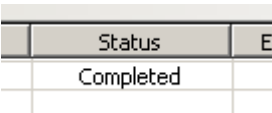


If you enable **Total Rebuild**, a Rebuild All command will be issued after the file is migrated to ensure that all the features are robust.

If you enable Purge Old Versions to keep the file size smaller, but that will also eliminate any old versions of the file.

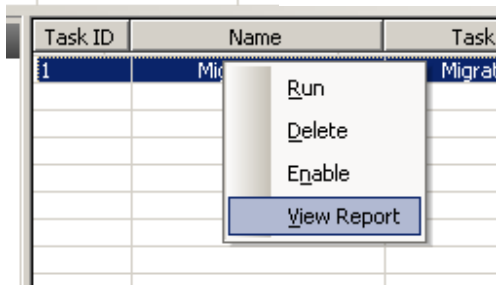
Press **OK**.

8. Press **OK** to run the task.

9. 

Status	E
Completed	

When the task is completed, you will see it as **Completed** under Status.



When you create a task, it is automatically saved. You can select it from the task list and run it at any time.