

# Slide Libraries in AutoCAD 2006 and Beyond

By Elise Moss

www.mossdesigns.com

So, you have created a slide library and you want to be able to continue using it with the new CUI introduced in AutoCAD 2006. It is a little tricky, but it can be done.

1. Type **CUI** on the command line to bring up the Custom User Interface dialog.

2.  Expand the *Legacy* folder.

Under this folder, you will see *Image Tile Menus*.

This is where your image tile menus are stored.

Highlight **Box3d** under *3D Objects*.

3.  Look at the Properties for the Box3d object.

Note the Macro under Command...this is the command that will be launched when the slide is selected.

Note the Slide section...it lists the Slide library- acad – and the Slide label – Box3d. The slide library is the acad.slb. The Slide label is the individual slide or file that is the slide image to be used that is stored inside the slide library.

If you are looking for a nice utility to create and manage your slide libraries, I recommend this website: <http://www.etecad.com/>

4.  Highlight the **Image Tile Menus** category.

Right click and select **New Image Tile Menu**.

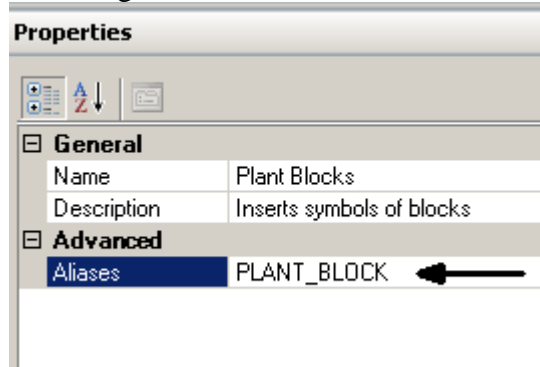
5.  Rename the menu to the preferred title.

# Slide Libraries in AutoCAD 2006 and Beyond

By Elise Moss

www.mossdesigns.com

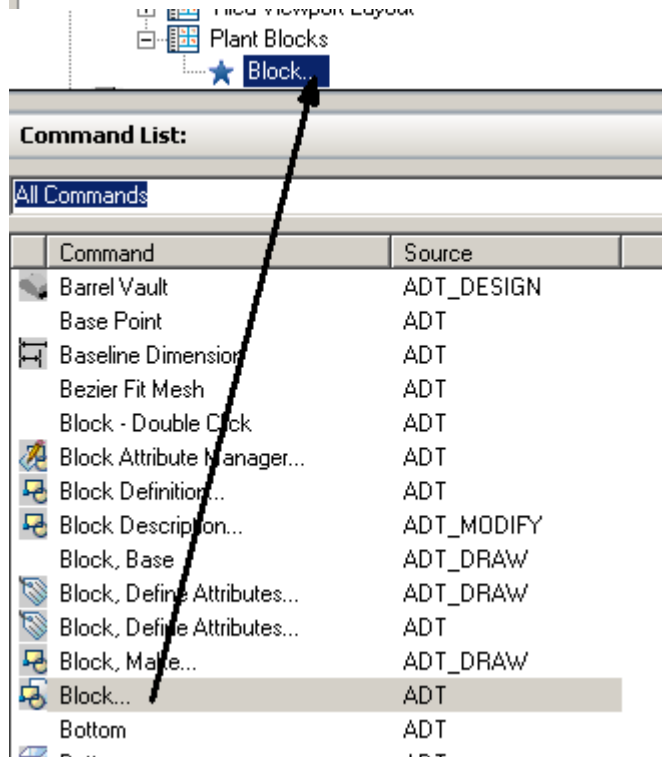
6.



In the Properties pane, fill in a description if desired.

Most importantly, assign an Alias to the Tile Menu. This is used to call the tile menu.

7.

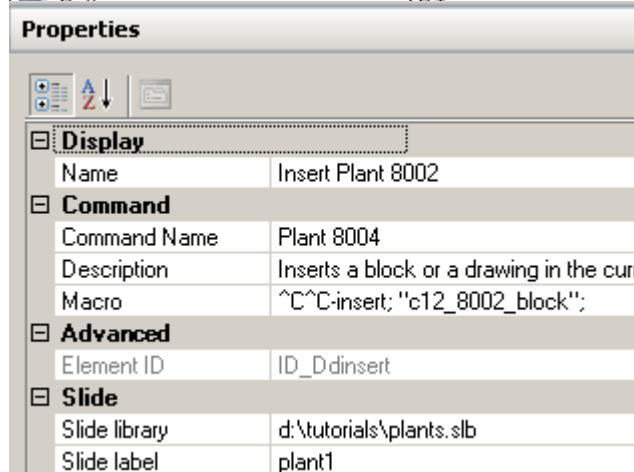


Locate a command in the Command List.

Drag and drop the desired command under the Tile Menu.

Alternatively, enter in the macro you want associated to the image from scratch.

8.



Fill in the Properties pane.

Enter the Macro.

Indicate the location and name of the slide library.

Indicate the specific slide to be used.


*Make sure you add any paths to the support files under Options, if you are asking AutoCAD to locate any blocks, etc.*

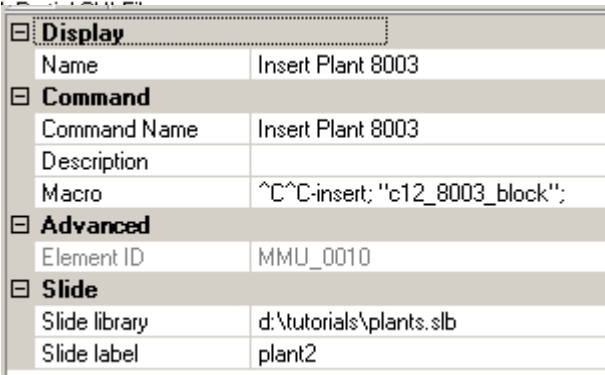
Thanks to CADToday for the blocks used in this tutorial.

# Slide Libraries in AutoCAD 2006 and Beyond

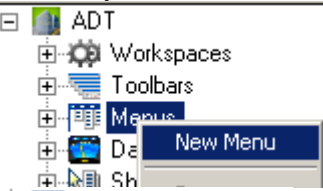
By Elise Moss

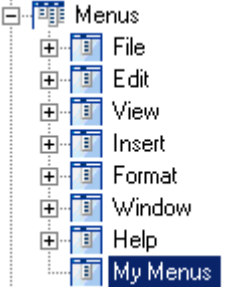
www.mossdesigns.com

9.  Continue adding Custom Commands by using the Create New Command tool or dragging and dropping commands.

10.  Edit the Properties pane for the new command.  
Enter the Macro.  
Indicate the location and name of the slide library.  
Indicate the specific slide to be used.
- | Display       |                                |
|---------------|--------------------------------|
| Name          | Insert Plant 8003              |
| Command       |                                |
| Command Name  | Insert Plant 8003              |
| Description   |                                |
| Macro         | ^C^C-insert; "c12_8003_block"; |
| Advanced      |                                |
| Element ID    | MMU_0010                       |
| Slide         |                                |
| Slide library | d:\tutorials\plants.slb        |
| Slide label   | plant2                         |

11. Continue until you have assigned each slide in the library to a custom command. You have created the Tile Menu definition, but you still need to create the link to that menu so you can launch it and access it.

12.  You can either create a new menu or add to an existing menu.

13.  Highlight **Menus**.  
Right click and select **New Menu**.

13.  Rename the menu to **My Menu**.

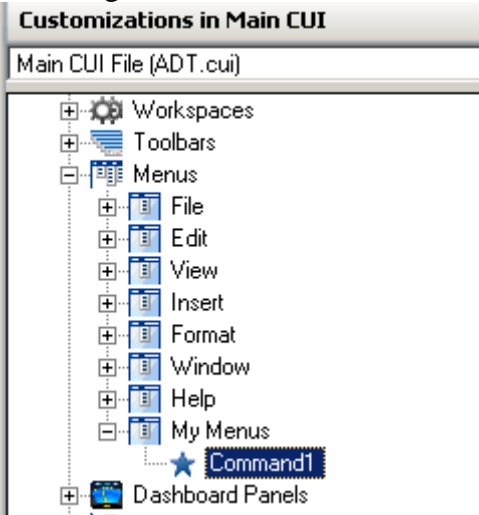
14.  Create a Custom Command by select the **Create a new command** tool..

Slide Libraries in AutoCAD 2006 and Beyond

By Elise Moss

www.mossdesigns.com

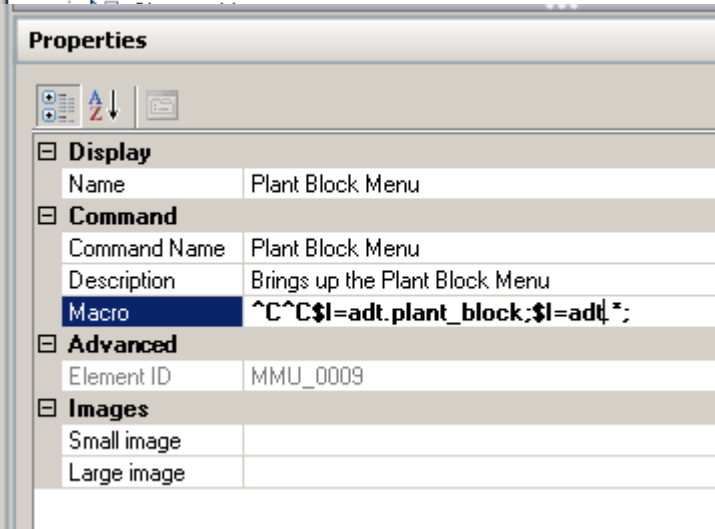
15.



Drag the new command into your menu.

This command will be used to launch the Image Menu.

16.



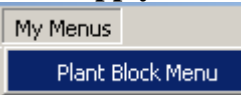
This command will be used to bring up the tile menu created earlier.

Specify a Name.  
The Macro is key.  
^C^C – cancels out any pending command  
\$I – launches the tile menu  
adt is the name of the cui file.

A period  
The alias name  
;  
The return to the top cui menu

17. Press **Apply** and **OK** to save and close the changes.

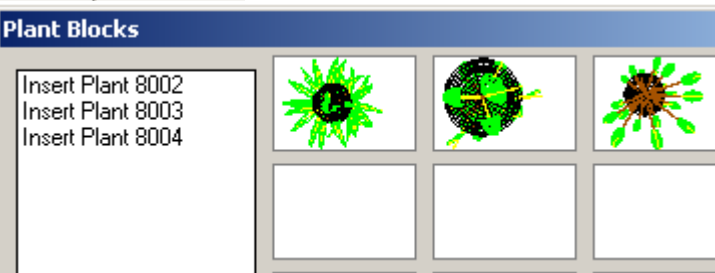
18.



Your menu should be in the location selected.

Try it out.

19.



Voila!