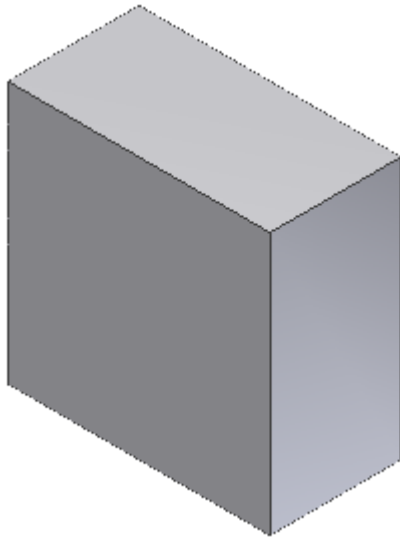


Sculpt

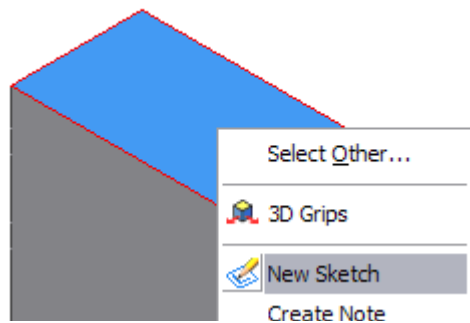
How to use the Sculpt Tool in Inventor R11

1.



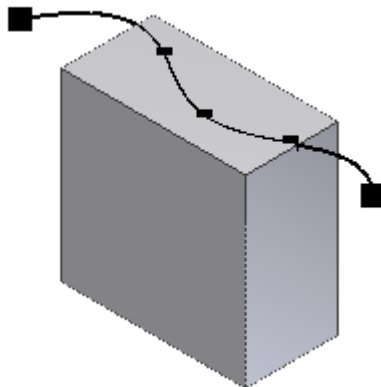
Create a 2 in x 2 in x 1 in box using Extrude.

2.



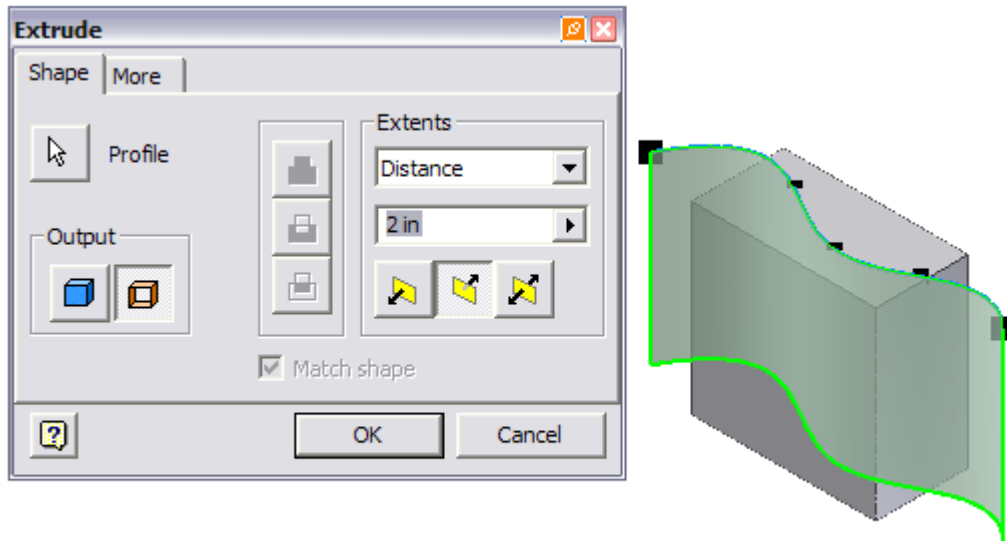
Select the top of the box.
Right click and select **New Sketch**.

3.




Draw a free-form spline.

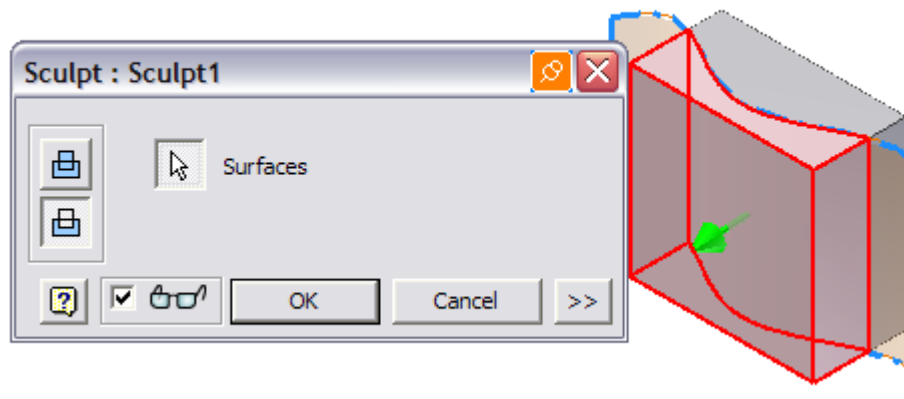
4.



5. Extrude as a surface through the block.

6.  Select the **Sculpt** tool.

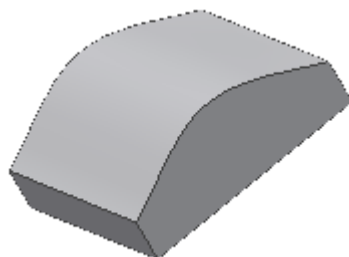
7.



8. Enable **Cut**.

Select the surface as the cutting tool.

Press **OK**.



Your sculpted surface.