


Modifying a Tag

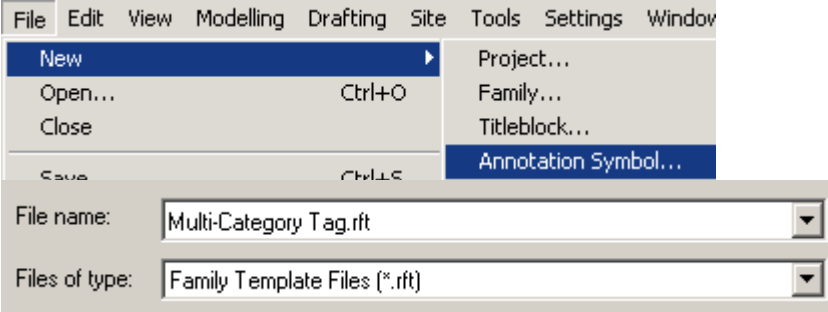
Drawing Name: door tag.rfa
Estimated Time: 10 minutes

This exercise reinforces the following skills:

- ❑ Shared Parameters
- ❑ Schedule/Quantities



TIP: Parameters must be assigned to the tag attached to the Revit object in order for the parameter values to appear in the schedule.




Go to
File→New→Annotation
Symbol.

Select the Multi-
Category Tag template.



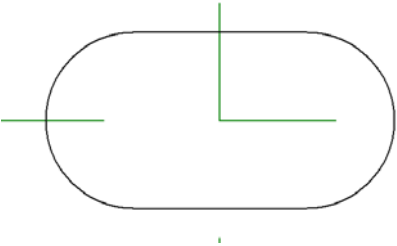
Save the file as 'SDC Door Tag.rfa'.



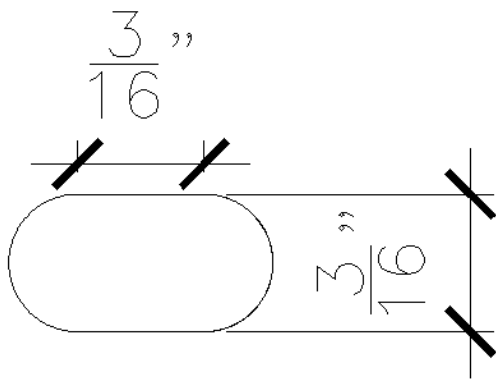
TIP: Save your custom tags to a separate folder away from Revit. To make them available to others in your office, place them on a shared drive.



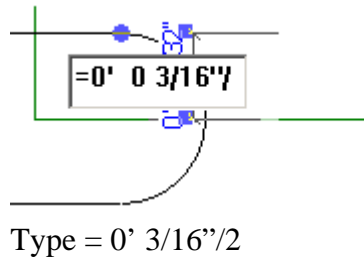
Select the Lines tool.



Draw the shape shown.
Remember this is a parametric shape so we can
change the size by applying dimensions.
Center the shape on the origin point.



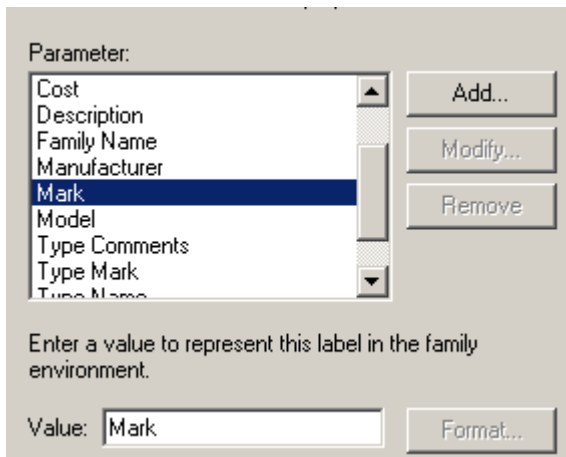
To center the shape on the origin, you can use a formula.



Type = 0' 3/16"/2

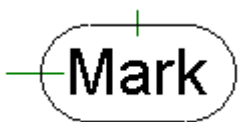


Select the Label tool.

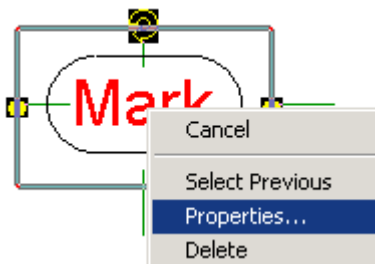


Select Mark from the Parameter list.

Press 'OK'.



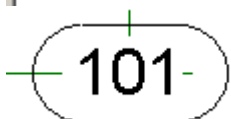
Position the label in the oval.



Select the label and right click.
Select 'Properties'.

Parameter	Value
Sample Text	101
Label	Mark
Format	Edit...
Horz. Align	Center
Vert. Align	Middle

Change the Sample text field to 101.
Press 'OK'.



The tag updates with the new sample text.



TIP: Only Multi-Category Tags can use shared parameters.