
Command Exercise

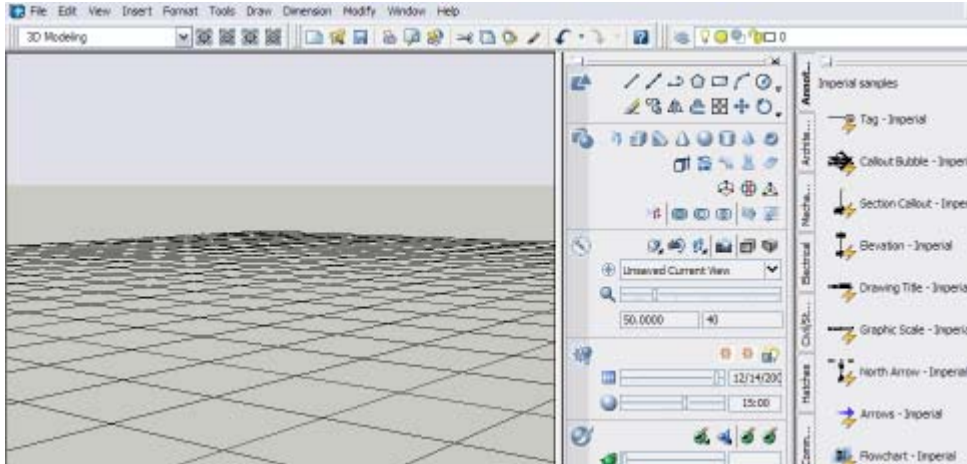
Exercise 1-1 – Workspace

Drawing Name: **(none, start from scratch)**
Estimated Time to Completion: 5 Minutes

Scope

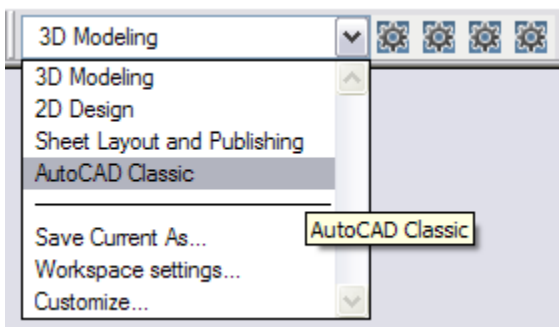
- Set the workspace to the AutoCAD Classic environment
1. Locate the AutoCAD Classic workspace on the toolbar.
 2. Set the AutoCAD Classic workspace as Current.

Solution

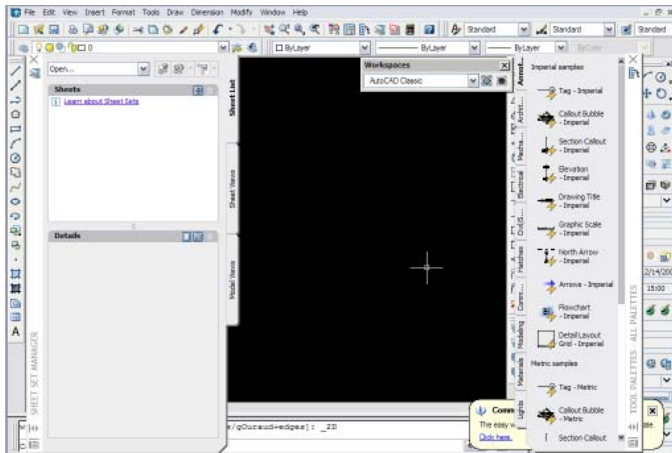


When AutoCAD 2007 is first installed and launched, it will come up using the 3D Modeling workspace.

1. Locate the Workspace toolbar in the upper left corner of the screen.

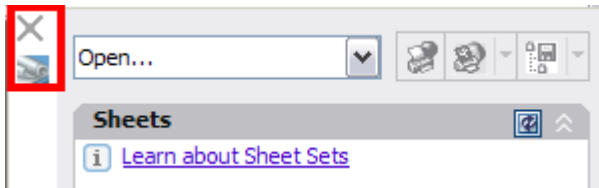


2. Press the down arrow on the right of the name field and locate the AutoCAD Classic workspace. Select this workspace.

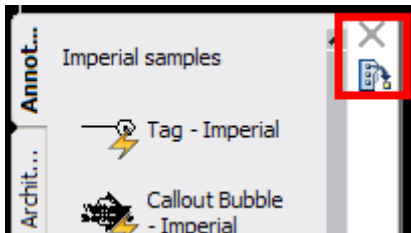


The environment will change appearance.

3. Close the Sheet Set Manager by pressing on the X in the upper left corner.

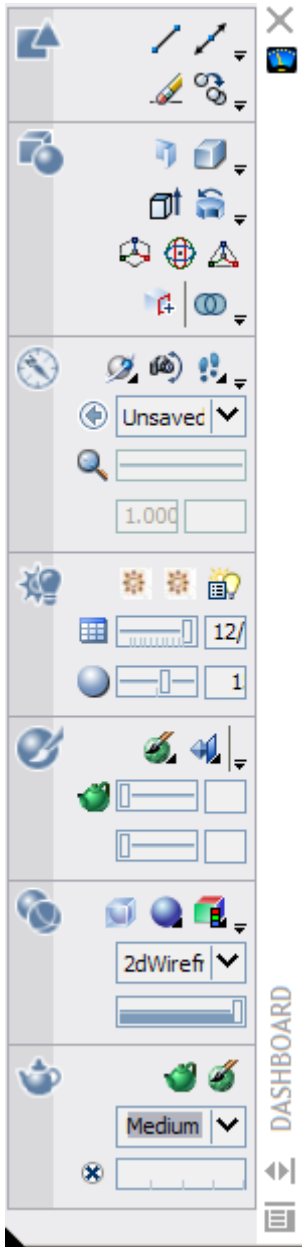


4. Close the Tool Palette by pressing the X in the upper right corner.

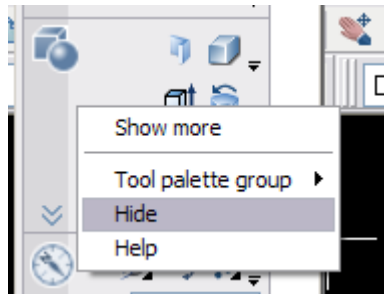


5. The Dashboard is a new feature in AutoCAD 2007. It can be customized so that only the tools you want to use are displayed.

The Dashboard is primarily used for 3D Modeling.



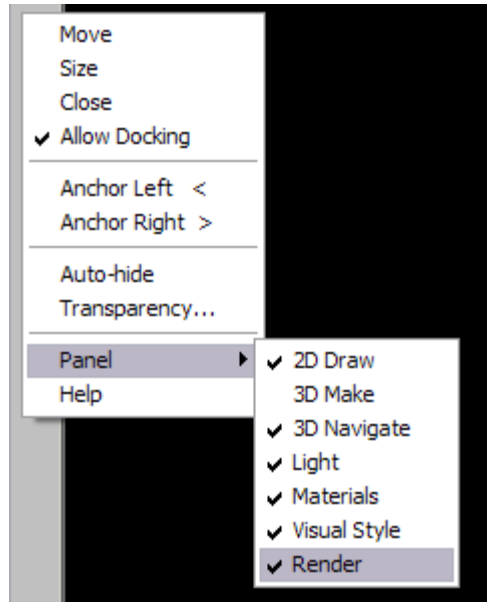
If you select the drop-down arrows on the first two lines, you will see the standard Draw and Modify tools.



The second section of the dashboard is used for 3D modeling.

Right click on that section and select 'Hide'.

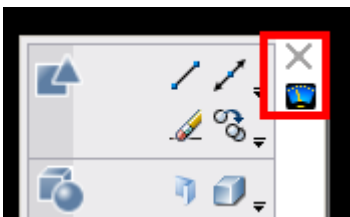
That section is no longer visible.



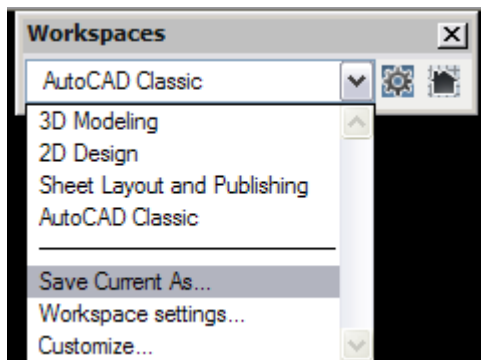
Right click on the dashboard's title bar (located on the right).

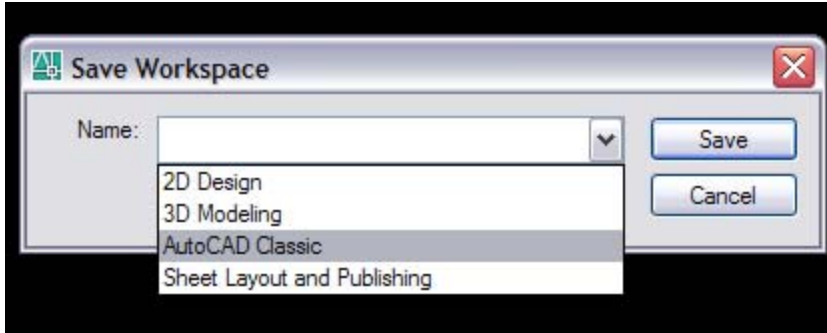
When you expand the Panel menu, you see that all panels are activated except for 3D Make (the panel you just set to hidden.)

6. Left click on '3D Make' to restore that panel's visibility.
7. Close the dashboard by selecting the X in the upper right corner.



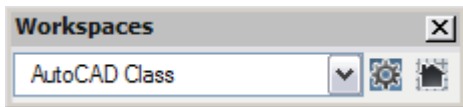
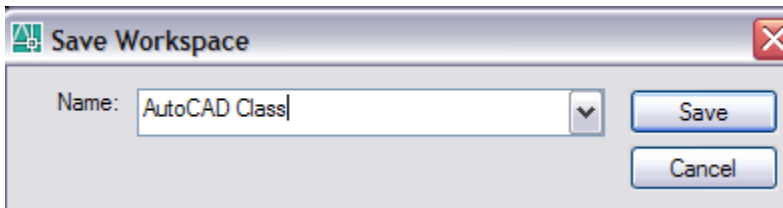
8. On the Workspaces toolbar, select 'Save Current As...' from the drop-down list.





You can save the current settings to AutoCAD Classic using the drop-down or create a new workspace setting.

9. Type 'AutoCAD Class' in the Name field. Press 'Save'.



The AutoCAD Class workspace is displayed as active in the Workspaces toolbar.

10. Close the Workspaces toolbar by pressing the X located in the upper right corner.

Tip:
When you make any changes, they will automatically be saved to the active workspace.

Filename: returnfromoz.doc
Directory: C:\tutorials
Template: C:\Documents and Settings\Elise Moss\Application
Data\Microsoft\Templates\Normal.dot
Title: Command Exercise
Subject:
Author: elise moss
Keywords:
Comments:
Creation Date: 12/14/2005 2:55 PM
Change Number: 1
Last Saved On: 12/14/2005 3:01 PM
Last Saved By: elise moss
Total Editing Time: 6 Minutes
Last Printed On: 12/14/2005 3:02 PM
As of Last Complete Printing
Number of Pages: 5
Number of Words: 300 (approx.)
Number of Characters: 1,711 (approx.)