

Elise Moss

Excerpt from Architectural Desktop 2004 Intermediate

Available from Schroff Development Corp www;sdacad.com

Exercise 8-12: Property Sets for Structural Members

Drawing Name: ex8-11

Estimated Time: 30 minutes


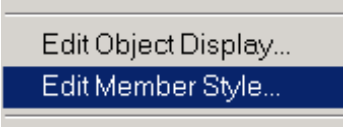
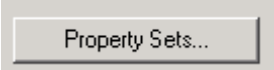

This exercise reinforces the following skills:

- ❑ Edit Member Style
- ❑ Property Sets

When I create frame structures it is easy for me to lose my place, zooming in and out, etc.

However, you can apply a label to your beams and columns to make it easy for you to locate them.

In this exercise, you copy Property Set Definitions and attach the data to your member styles. This data can be used when creating your schedules and help you manage the information in your project.

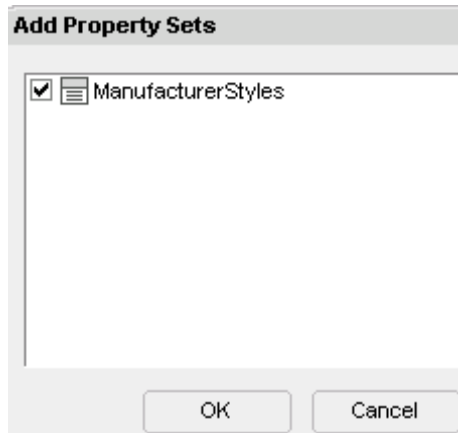
1.  Open *ex8-11.dwg* or start a new drawing and place a grid and some columns for this exercise.
2.  Select a column.
Right click and select **Edit Member Style**.
3.  Select the **Property Sets** button.
4.  Select the **Add Property Sets** button.

Elise Moss

Excerpt from Architectural Desktop 2004 Intermediate

Available from Schroff Development Corp www;sdacad.com

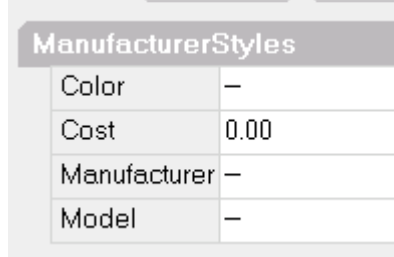
5.



Manufacturer Styles is enabled.

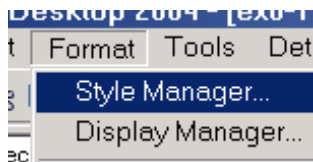
Press **OK**.

6.



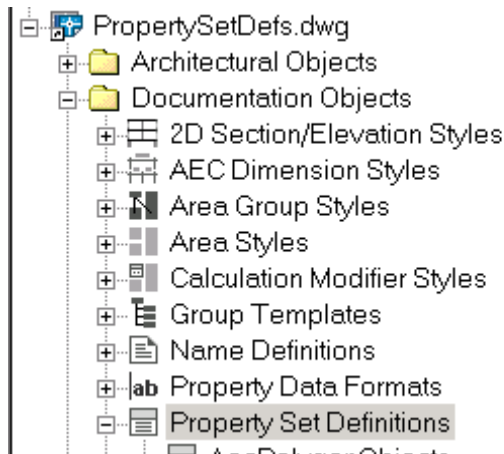
The Property Set data for Manufacturer styles is not complete. We need to configure some more fields for our structural members.

7.

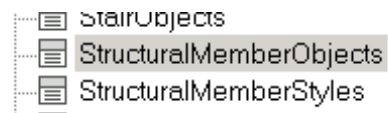


Go to **Format**→**Style Manager**.

8.



Browse to the Property Set Definitions under Documentation Objects.



Locate the StructuralMemberObjects and StructuralMemberStyles. Copy these into your current drawing – ex8-11.dwg.

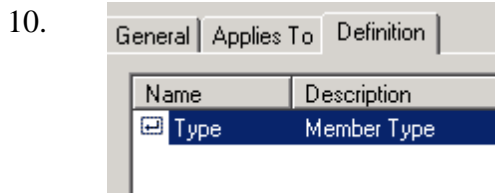
Elise Moss

Excerpt from Architectural Desktop 2004 Intermediate

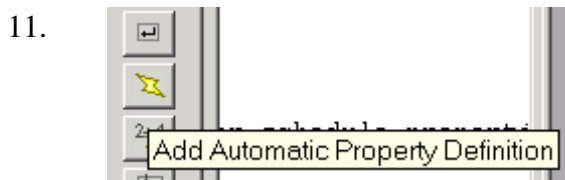
Available from Schroff Development Corp www;sdacad.com



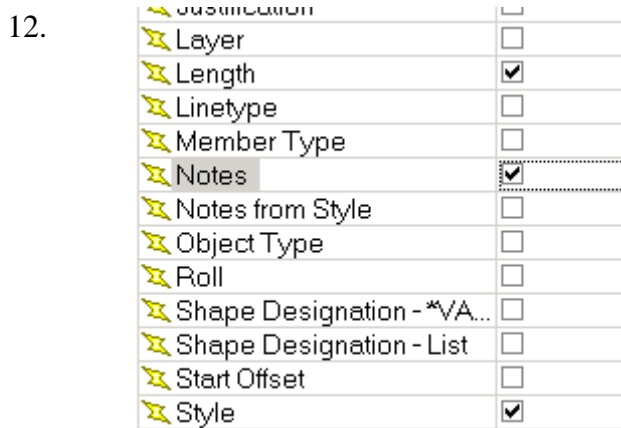
Select the StructuralMemberStyles.
Right click and select **Edit**.



Select the Definition tab.
So far, we only have one field
assigned:
Type for Member Type.



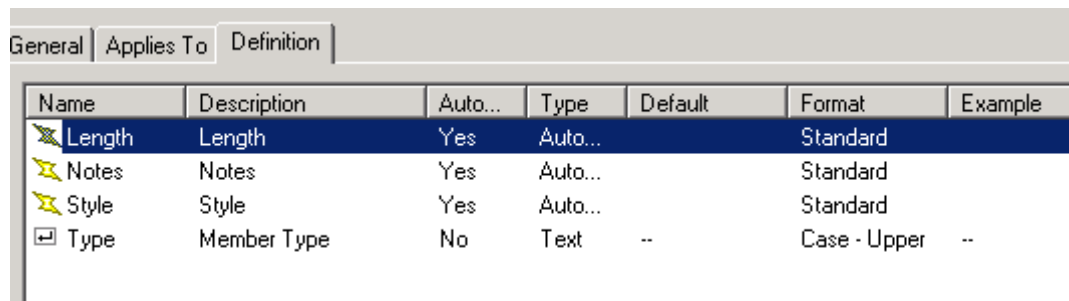
Select the **Add Automatic Property
Definition** tool.



Enable Length, Notes, and Style.

Press **OK**.

We now have added these additional fields to our data set for structural members.



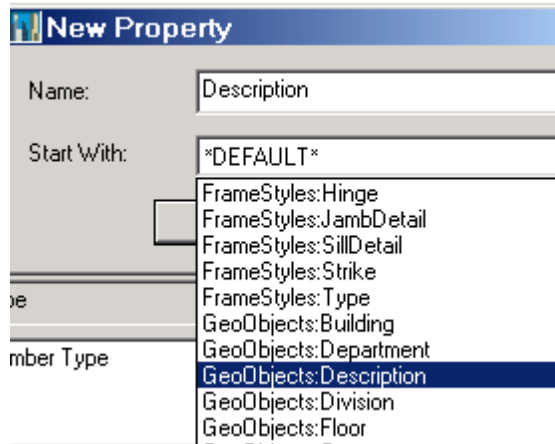
13.  Select the **Add Manual Property Definition** tool.

Elise Moss

Excerpt from Architectural Desktop 2004 Intermediate

Available from Schroff Development Corp www.sdcacad.com

14.



In the Name field, enter Description.

In the Start With field, select **GeoObjects:Description**.

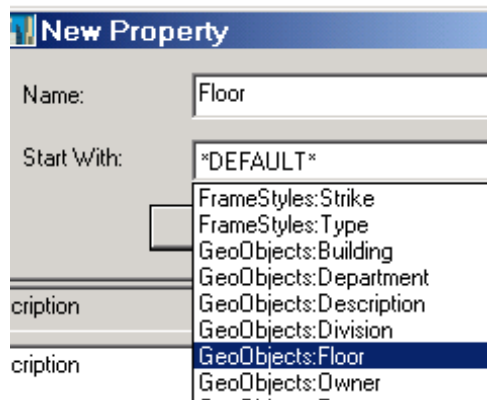
Press **OK**.

15.



Select the **Add Manual Property Definition** tool.

16.



In the Name field, enter **Floor**.

In the Start With field, select **GeoObjects:Floor**.

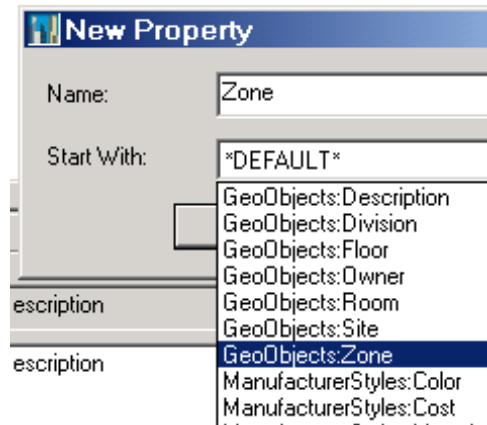
Press **OK**.

17.



Select the **Add Manual Property Definition** tool.

18.



In the Name field, enter **Zone**.

In the Start With field, select **GeoObjects:Zone**.

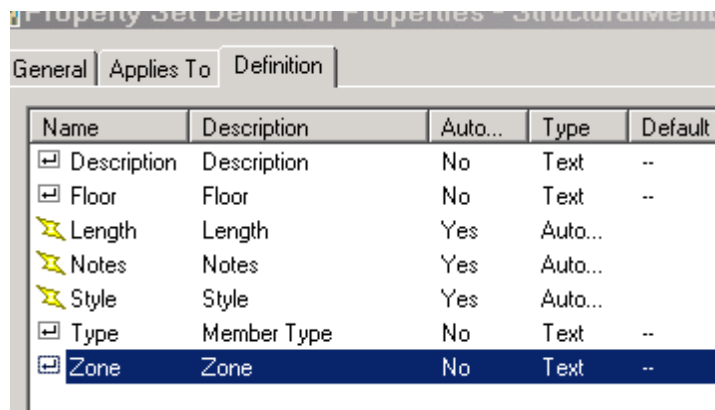
Press **OK**.

19.

Elise Moss

Excerpt from Architectural Desktop 2004 Intermediate

Available from Schroff Development Corp www;sdacad.com

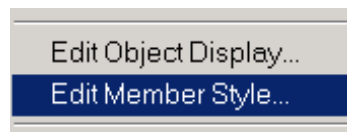


We see the fields we have assigned for the Structural Member Style.

Press **OK**.

Close the Style Manager dialog.

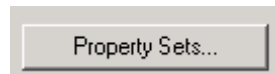
20.



Select a column.

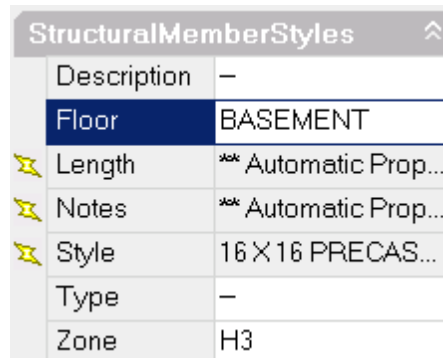
Right click and select **Edit Member Style**.

21.



Select the **Property Sets** button.

22.



In the Floor field, enter **BASEMENT**.

In the Zone field, enter the location of the column.

If you add Entity Data for each column, you will be able to easily identify them as you move around the plan.

23. Save the file as *ex8-12.dwg*.