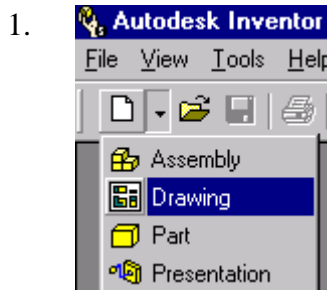


## Exercise 12-10:

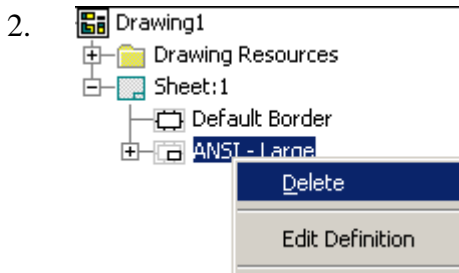
### Creating a Custom Title Block

File: New using Standard (inches)  
Estimated Time: 60 minutes

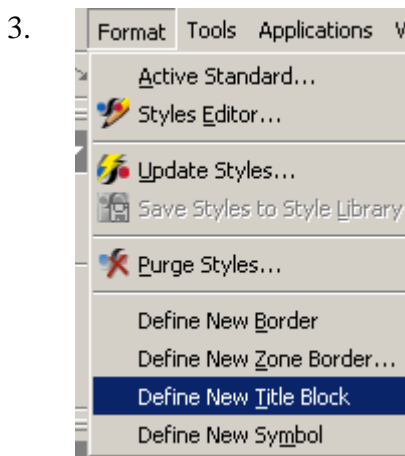
This exercise will review the sketch tools used to create a custom title block.



Open a new Drawing file.  
Save as *ex12-10.idw*.



Highlight the ANSI-Large Title block in the Browser.  
Right click and select **Delete**.

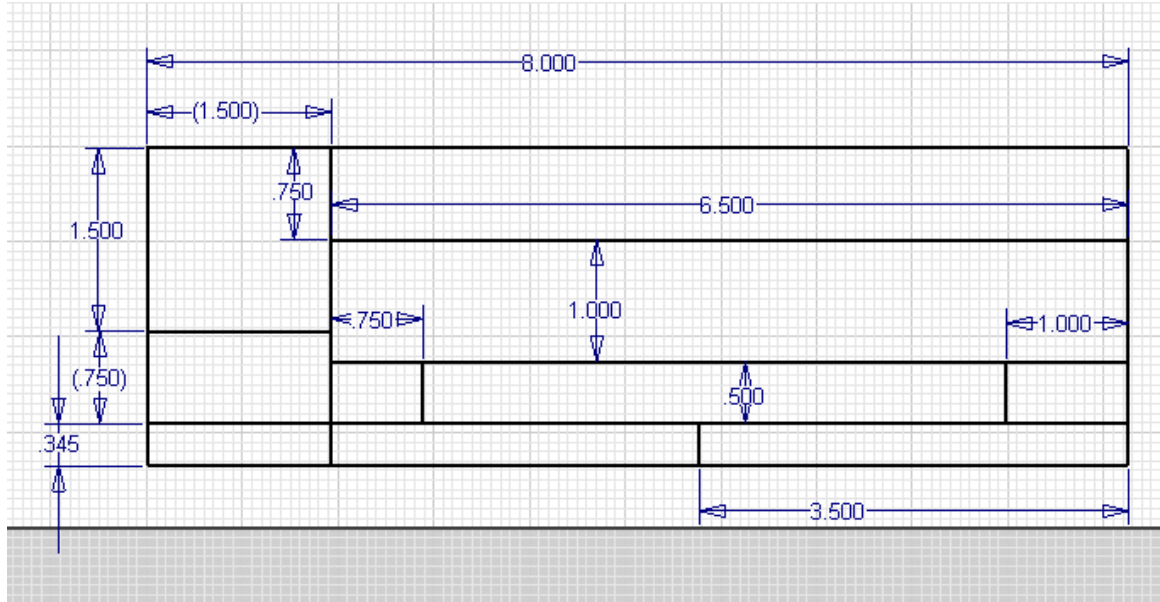


Go to **Format**→**Define New Title Block**.



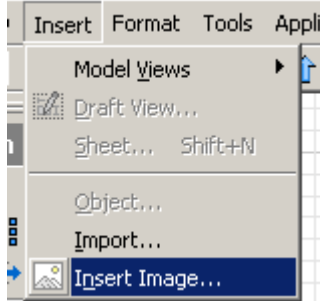
Use ZOOM WINDOW to zoom into the title block area.

5.



Draw the lines as shown using the Line tool.

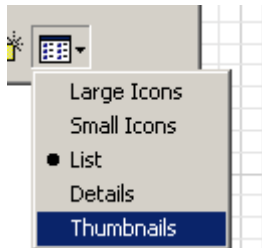
6.



To insert a company logo, use **Insert**→**Insert Image**.

Next, indicate the area the picture is to be placed by picking two points to form a rectangle.

7.



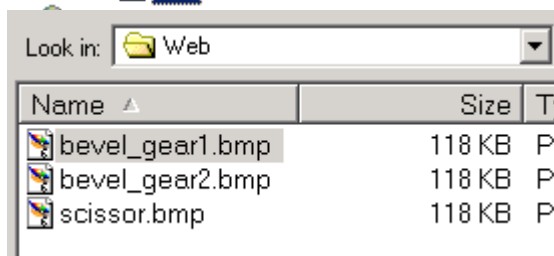
To see a preview of the image, set your view to Thumbnails.

8.

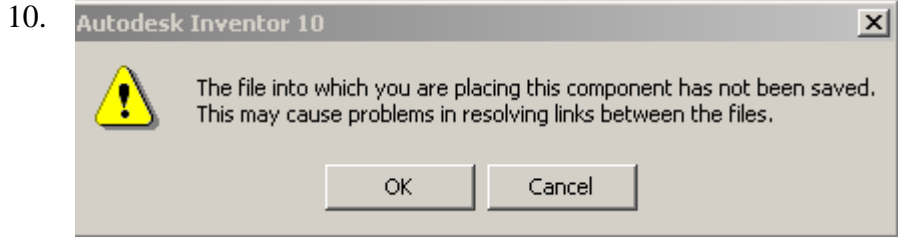


There are several bmp files in the Web folder under Inventor you can use if you don't have a bmp file available.

9.

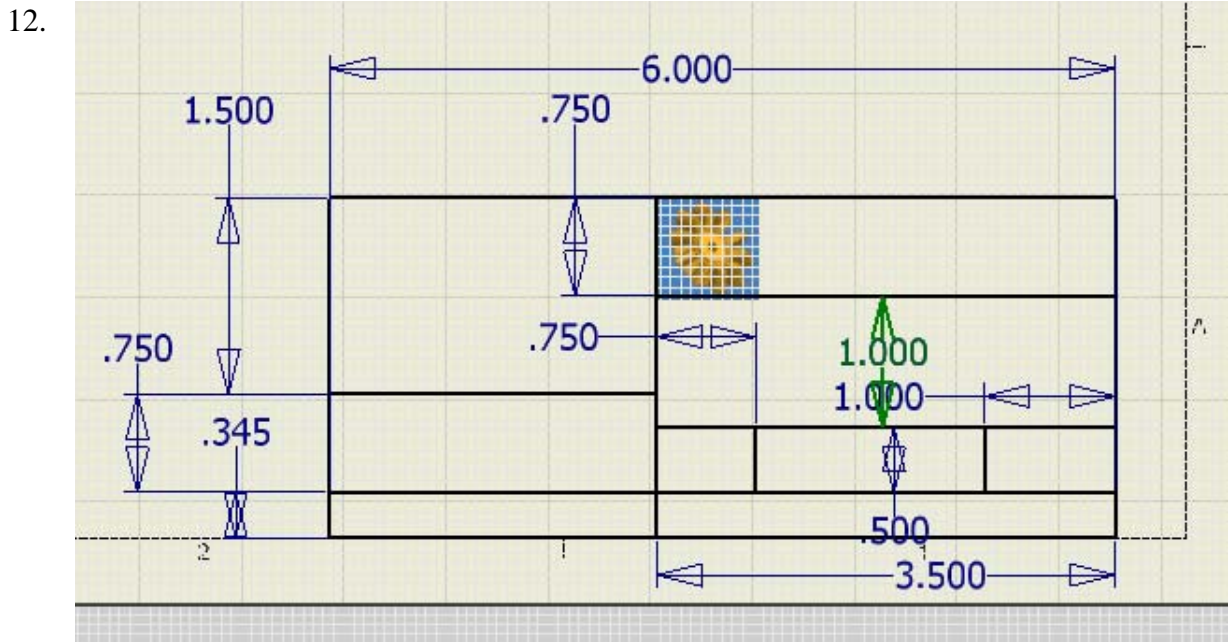


Browse to the Web folder.  
Select the *bevel\_gear1.bmp*.  
Press **Open**.



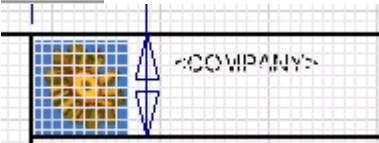
If you haven't saved your file (see Step 1), you will see this warning dialog.

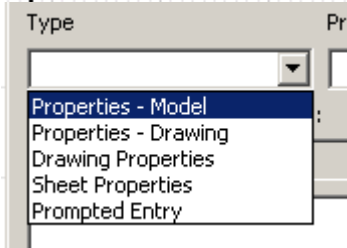
11.

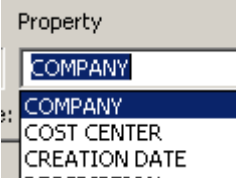


You can use the corner grips on the bitmap to reposition and resize so it fits properly.

13.  Select the **Text** tool.

14.  Draw a rectangle next to the logo to indicate the location for company information.

15.  Select **Properties – Model** under Type.

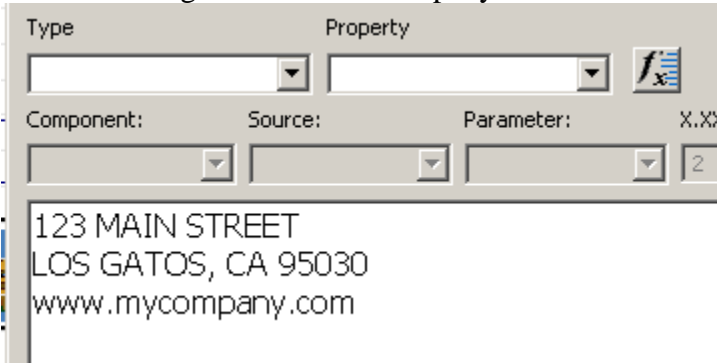
16.  Select **COMPANY** under Property.
- The Company name that is placed in the File Properties will automatically fill in the title block.

17.  Set the text height to **.218**.


18.  Press the **Add Text Parameter** button.

19.  The property will appear in the text window.  
Press **OK**.

20. Select the **Text** tool again.  
Draw a rectangle next to the Company field.

21.  Leave Type and Property blank.
- Enter in an address and website URL.
- This is a static value which can not be changed.
- Press **OK**.

22.  With Text Box enabled, right click and select **Edit Text**.

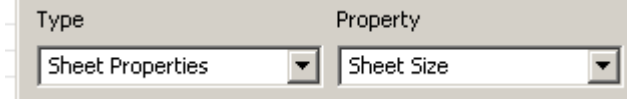
23.  Set the text height to **0.120**.




**TIP.** When you use dimensions to set the size of elements in a title block or border, the dimensions are hidden when you finish editing.

24.  Select the **Text** tool.

25.  Draw a rectangle in the box for Sheet Size.

26.  Set Type as **Sheet Properties**.  
Set Property as **Sheet Size**.

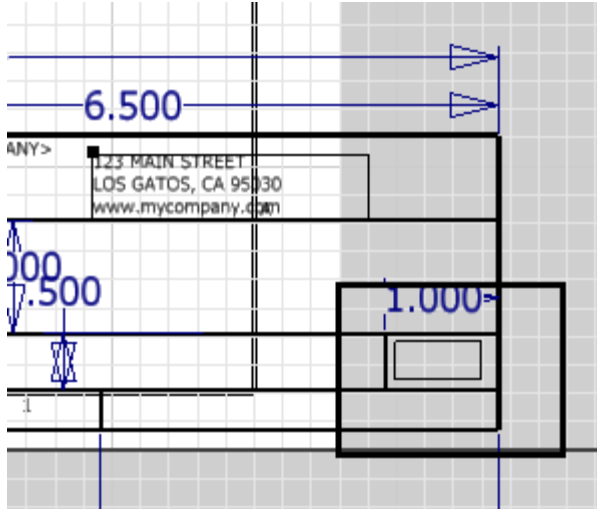
27.  Set font height to **0.120**.  
Press **OK**.

28.  Press the **Add Text Parameter** button.

29.  The property will appear in the text window.  
Press **OK**.

30.  Select the **Text** tool.

31.

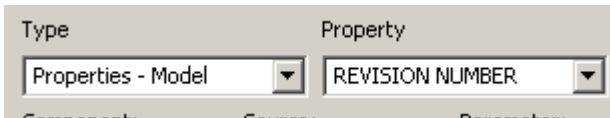


Draw a rectangle in the revision space.



**TIP:** By using Sheet Properties instead of using a Prompted Entry, the value will automatically update when the user redefines the sheet properties in the browser.

32.



Set Type to **Properties -Model**.  
Set Property to **Revision Number**.

33.



Set font height to **0.120**.  
Press **OK**.

34.



Press the **Add Text Parameter** button.

35.



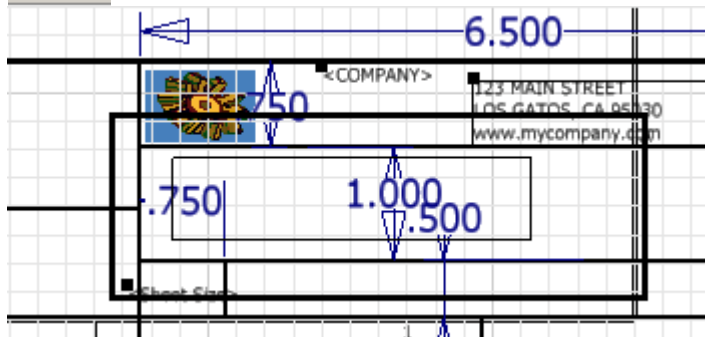
The property will appear in the text window.  
Press **OK**.

36.



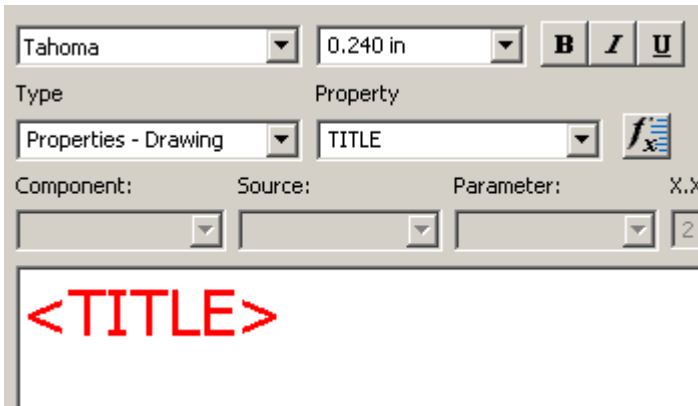
Select the **Text** tool.

37.



Draw a rectangle in the title space.

38.



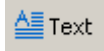
Set Type to **Properties - Drawing**.  
Set Property to **Title**.  
Set the text height to **0.240**.

39.



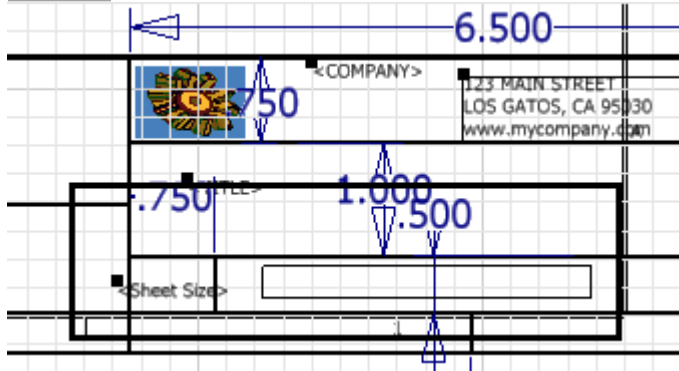
Press the **Add Text Parameter** button.  
The property will appear in the text window.  
Press **OK**.

40.



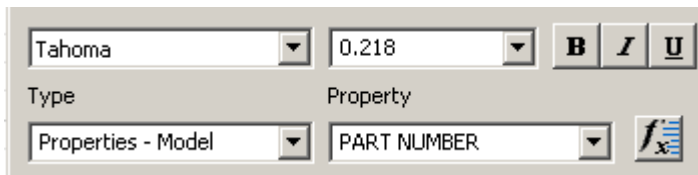
Select the **Text** tool.

41.



Draw a rectangle in the part number space.

42.



Set Type to **Model Properties**.  
Set Property to **Part Number**.  
Set Height to **0.218**.

43.



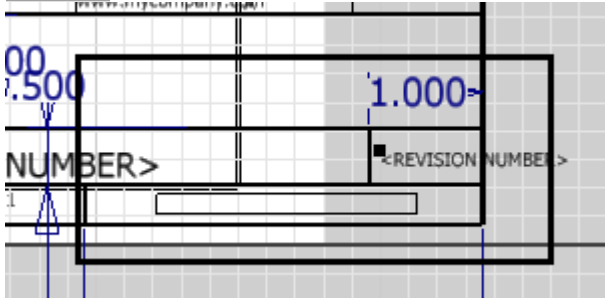
Press the **Add Text Parameter** button.  
The property will appear in the text window.  
Press **OK**.

44.

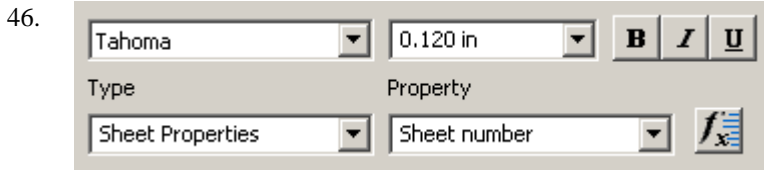


Select the **Text** tool.

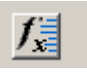
45.



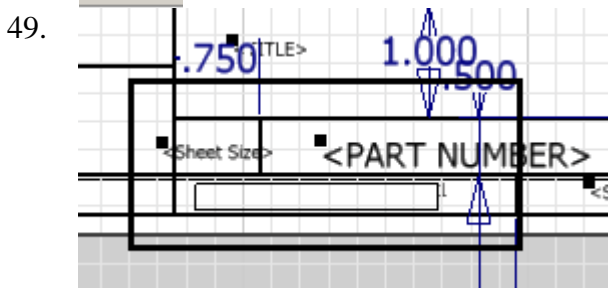
Draw a rectangle in the sheet number space.



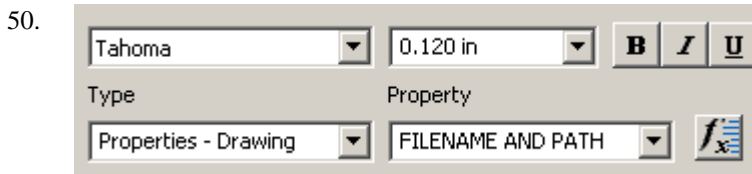
Set Type to **Sheet Properties**.  
Set Property to **Sheet Number**.  
Set Height to **0.120**.

47.  Press the **Add Text Parameter** button.  
The property will appear in the text window.  
Press **OK**.


48.  Select the **Text** tool.

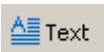


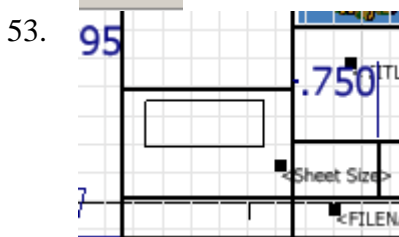
Draw a rectangle in the file name space.



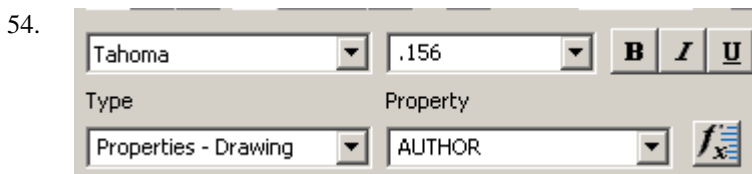
Set Type to **Properties - Drawing**.  
Set Property to **FILENAME AND PATH**.  
Set Height to **0.120**.

51.  Press the **Add Text Parameter** button.  
The property will appear in the text window.  
Press **OK**.


52.  Select the **Text** tool.

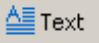


Draw a rectangle in the drafter name space.



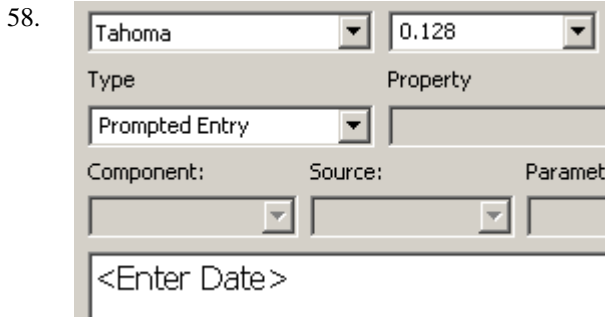
Set Type to **Properties - Drawing**.  
Set Property to **AUTHOR**.  
Set Height to **0.156**.

55.  Press the **Add Text Parameter** button.  
The property will appear in the text window.  
Press **OK**.

56.  Select the **Text** tool.



Draw a rectangle in the Date space.



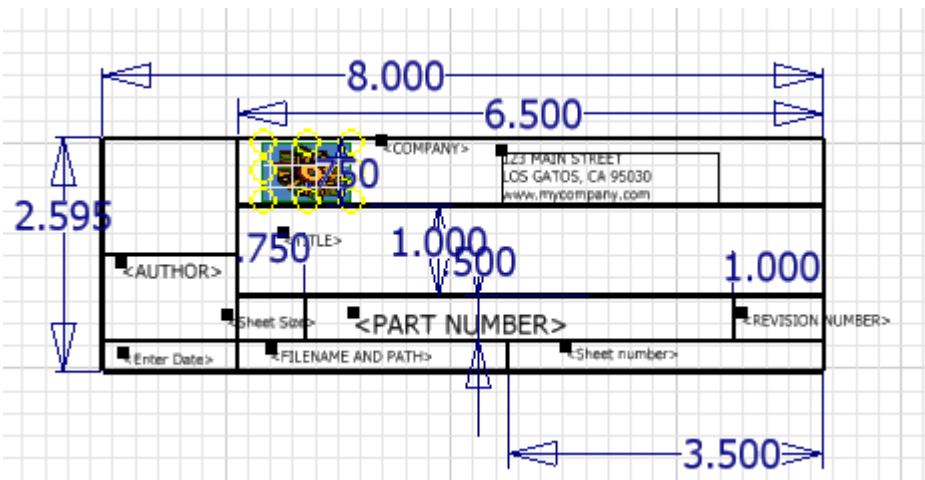
To add a prompted entry (similar to an attribute):

Set Type to **Prompted Entry**.

Set Prompt to 'Enter Date'.

Set Height to **0.128**.

Press **OK**.

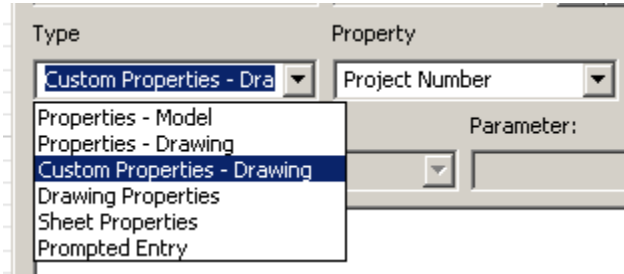


The title block automatically inserts values into the Model Properties fields using the values stored in the Properties dialog box for each model.

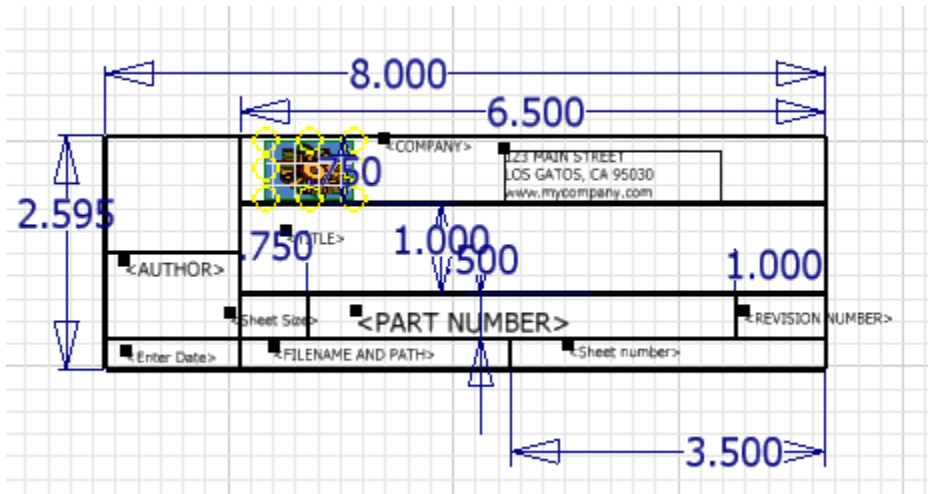
If you would like to add fields to be used in your title block, you can add custom fields under the Custom Tab in the iProperties dialog box.



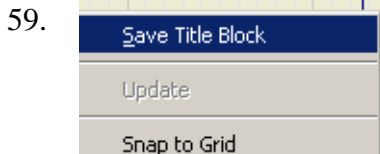
**TIP:** Inventor will only accept bitmaps for insertion, so your file must have a \*.bmp extension.



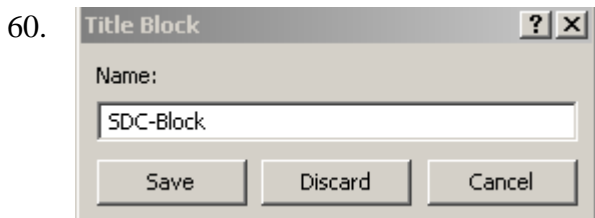
The Custom fields will then appear in the Text dialog box.



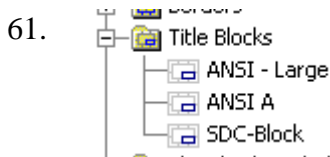
The completed title block.



Once the title block is complete, right click and select **Save Title Block**.



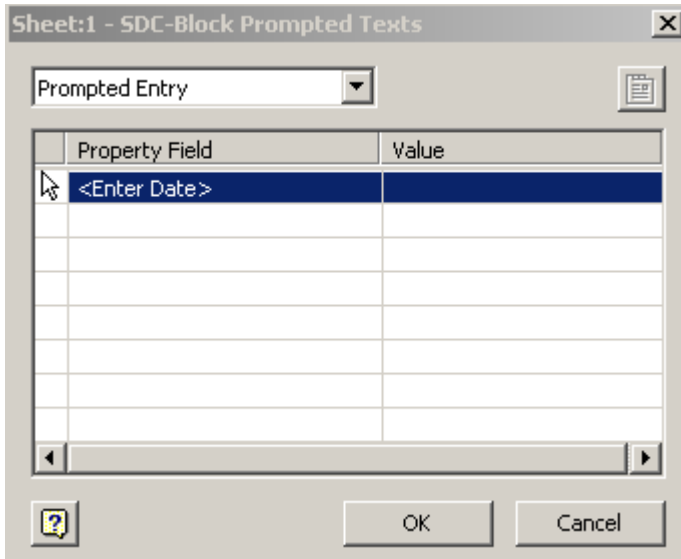
Assign a name to your title block. Do not use punctuation marks. Spaces are OK.



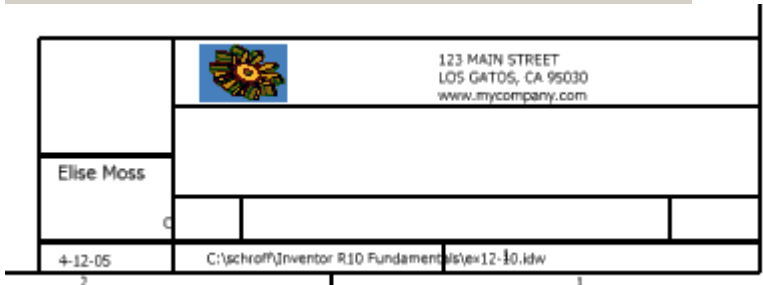
Your new title block name automatically appears in the browser.

To insert, select and double click.

62.



You will then be prompted for any prompted entry fields that were defined.



When you first place the title block, most of the fields will show blank.

The only ones filled in are those linked to Sheet Properties.

Remember most of your fields are set by Model Properties and will vary depending on the model you use for your drawing.

Once you place a view in the drawing with the associated model properties defined, the title block should fill in correctly.

63. Save the file as *EX12-9.idw*.