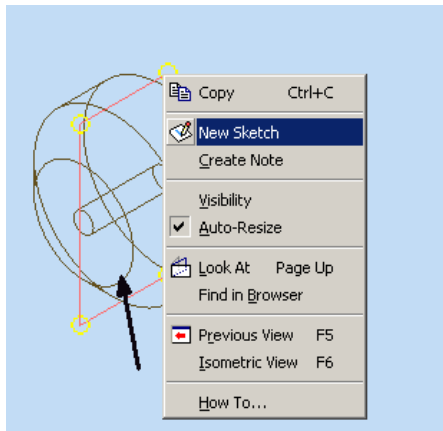


Placing Holes on a Chamfered Surface in Inventor
By Elise Moss

Objective: Place holes on a chamfered surface

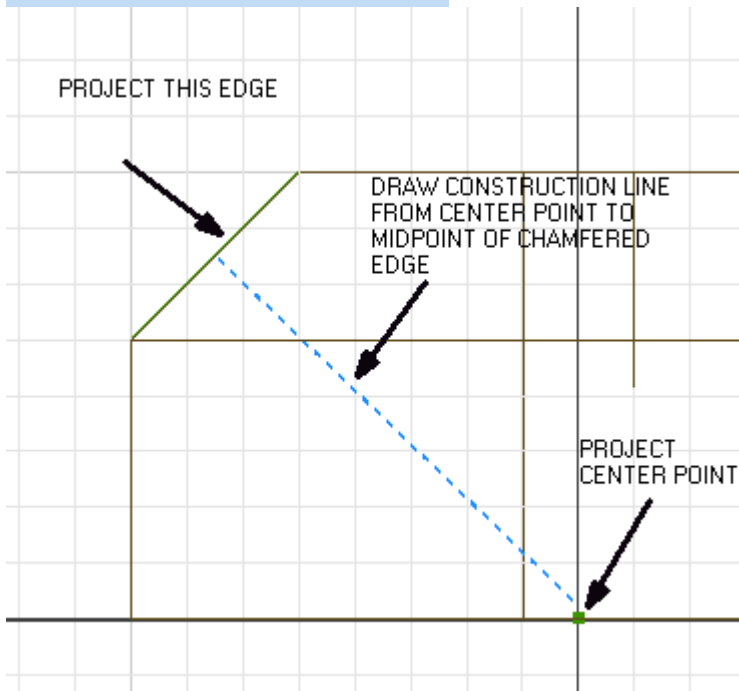
Solution:

1.



Start a New Sketch on a Workplane.

2.

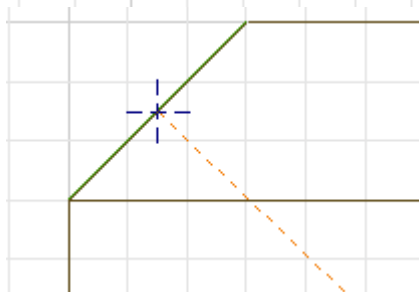


Project the center point.

Project the chamfered edge.

Draw a construction line from the center point to the midpoint of the chamfered edge.

3.



Place a center point at the end point of the sketch coincident to the chamfered edge.

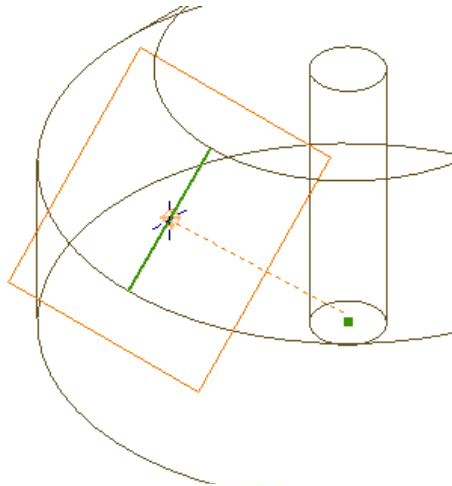
Finish the sketch.

4. Place a work point coincident to the center point placed on the sketch.

Placing Holes on a Chamfered Surface in Inventor

By Elise Moss

5.

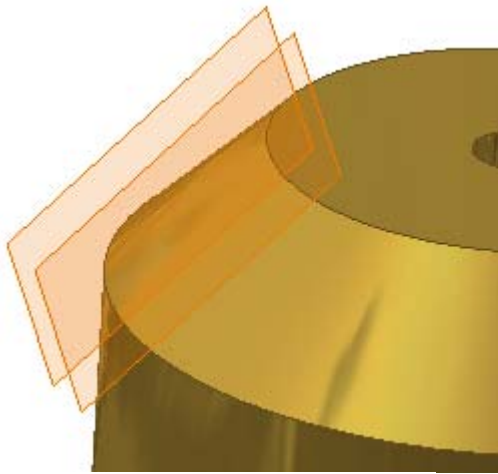


Place a work plane using the work point and the sketched line.

Use 'Select Other' to select the line.

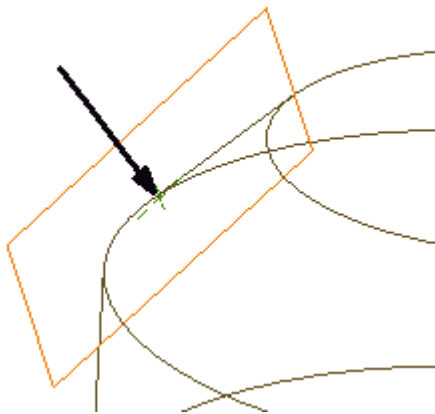
You now have a Workplane coincident to the chamfered edge.

6.



Create an offset Workplane .1 above the existing workplane.

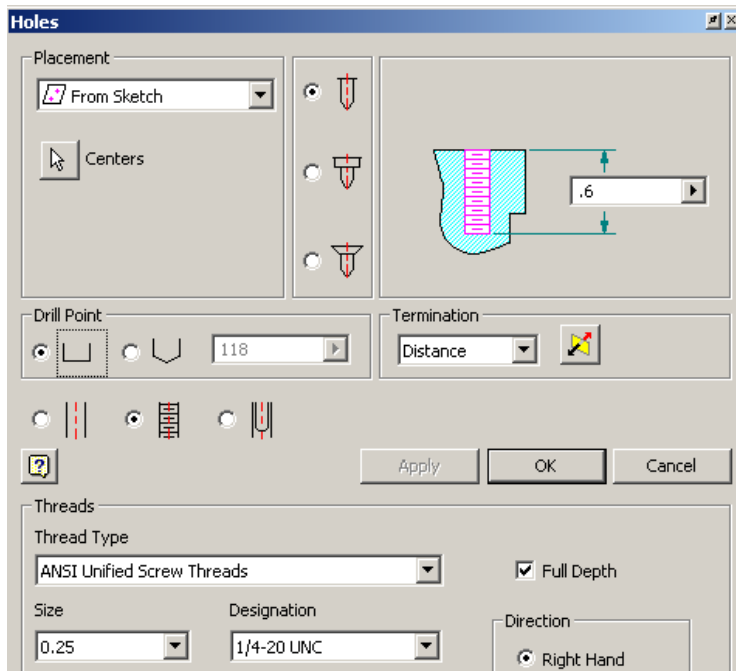
7.



Project the work point onto the offset work plane.

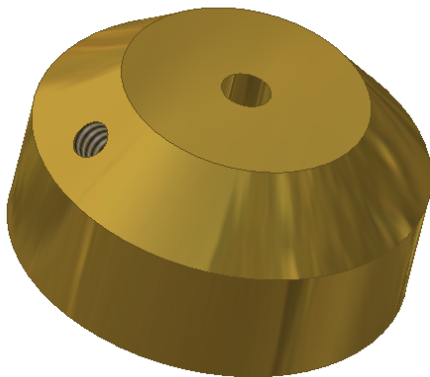
Placing Holes on a Chamfered Surface in Inventor

By Elise Moss

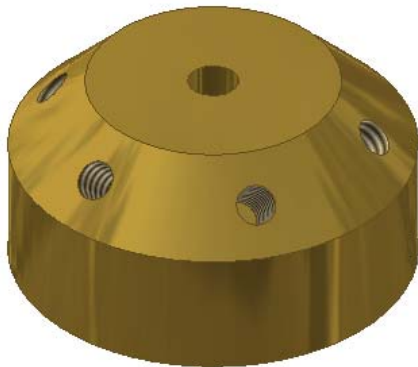


- Place a hole using the From Sketch option.
Select the projected Work Point as the Center.

Be sure the direction of the hole is going into the part or you will get an error message.
Press **OK**.



The hole is placed.



Array the bolt holes.