

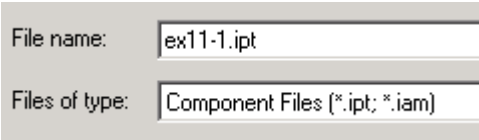
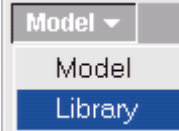

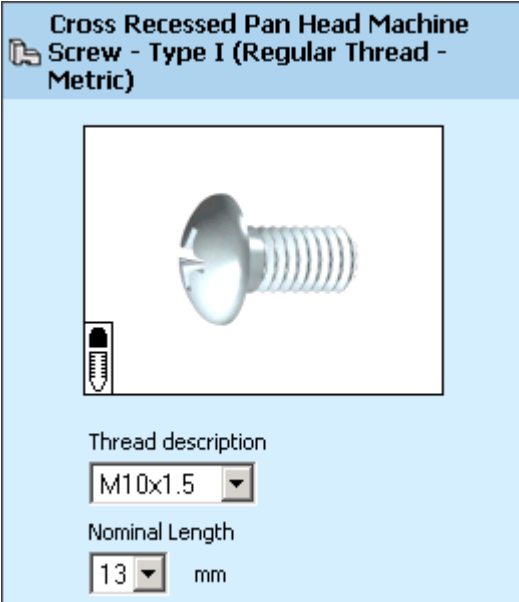



Inventor R8 Fundamentals available from Schroff Development

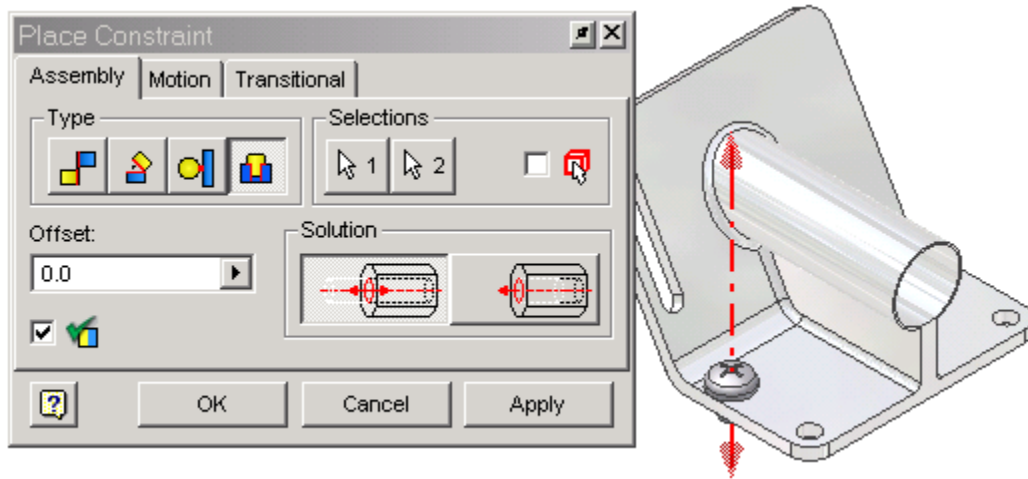
Elise Moss

Exercise 16-10 Pattern Component

File: new assembly, 11-1.ipt
Estimated Time: 10 minutes

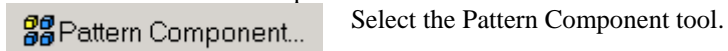
-  Select the new assembly template to start a new file.
-  Select the Place Component tool.
-  Locate *ex11-1.ipt* and press Open.
Place one instance of the part into your assembly.
- Save your file as *ex16-10.iam*.
-  Select the Library option in your Browser panel.
-  Use Search to locate a Cross Recessed Pan Head Machine Screw-Type I (Regular Thread-Metric).
-  Set the Thread description to M10x1.5.
Set the Nominal Length to 13 mm.
Use the eyedropper to place a single screw into your assembly.
If you haven't saved your assembly file, you will get an error message prompting you to save.
-  Switch back to Model mode.

9.



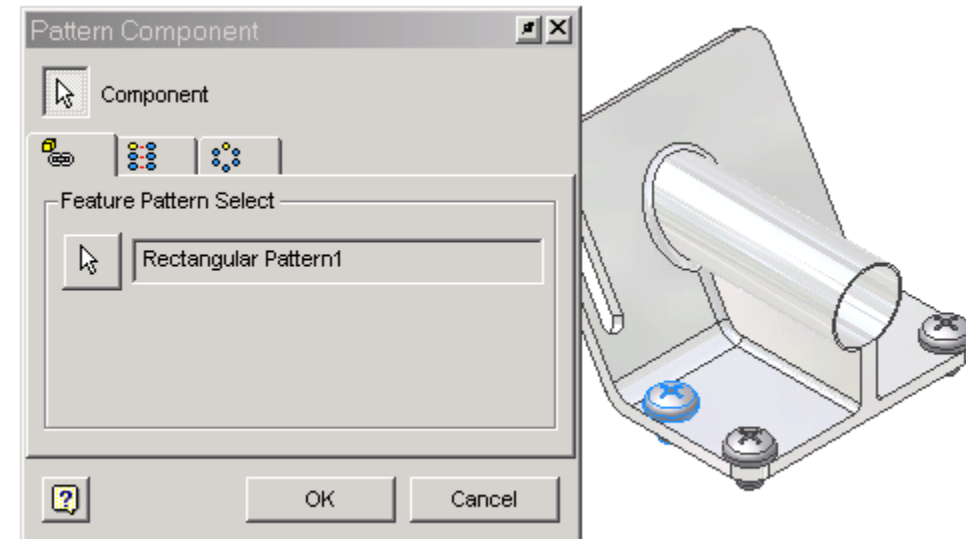
Use an Insert constraint to place the screw into a hole.

10.



Select the Pattern Component tool.

11.



Select the screw you just inserted.

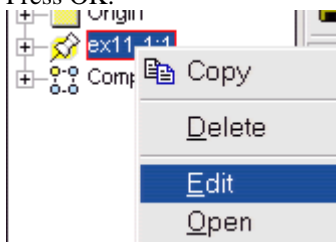
Select the Feature Pattern Select.

Pick one of the empty holes.

A screw will be placed in each hole in the rectangular pattern.

Press OK.

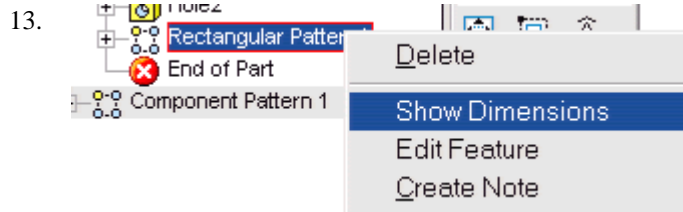
12.



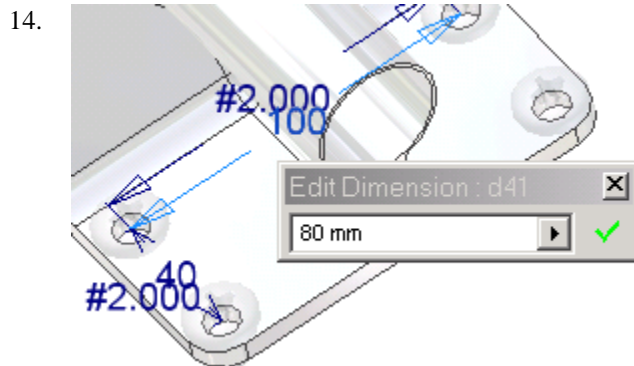
Highlight *ex11-1.ipt* in the browser.

Right click and select Edit.

Inventor R8 Fundamentals available from Schroff Development
Elise Moss



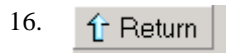
Highlight the Rectangular Pattern in the browser.
Right click and select Show Dimensions.



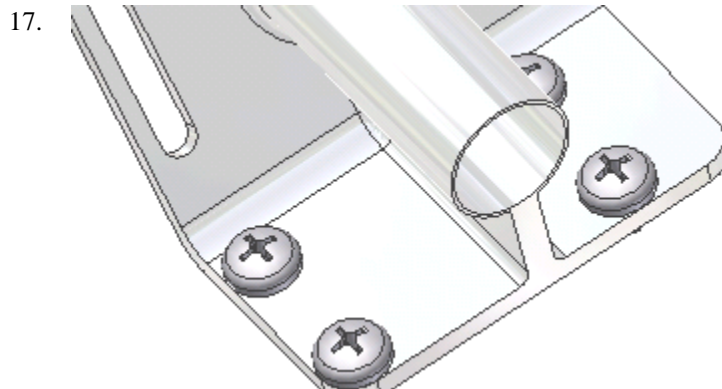
Select the 100 mm dimension.
Change it to 80 mm.



Select the Update tool.



Select the Return tool to return to the assembly environment.



The screws are automatically repositioned.

18. Save as *ex16-10.iam*



TIP: In order to use the Pattern Select option, the component used must have a pattern as one of the features.