

Elise Moss

www.mossdesigns.com

This is an excerpt from the AutoCAD 2006 Fundamentals text available from [Schroff Development Corp.](#)

Command Exercise

Exercise - Using Dynamic Input

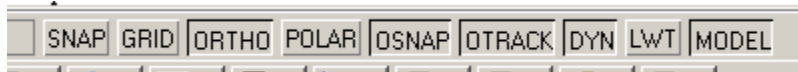
Drawing Name: **(none, start from scratch)**

Estimated Time to Completion: 5 Minutes

Scope

Control the appearance of Dynamic Input

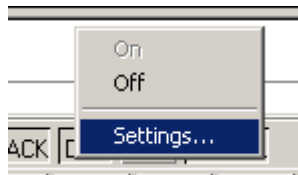
Solution



1. Verify that ORTHO and DYN are both enabled. Start the Line command. Move the cursor around the drawing window. Note how the coordinates in the input bar change depending on the cursor location.



- 2.

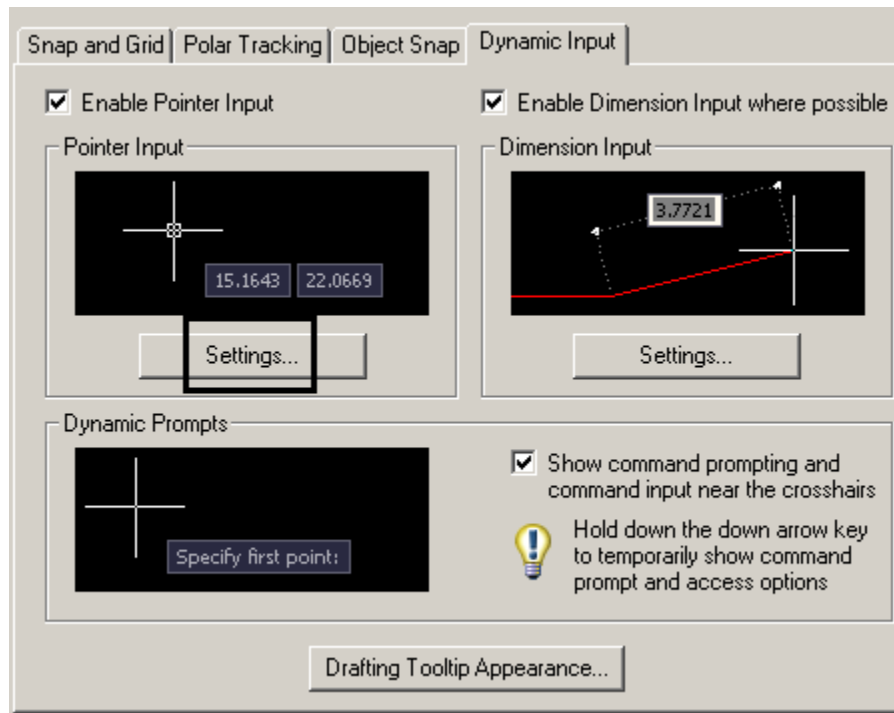


Place your cursor over the DYN toggle button. Right click and select **Settings**.

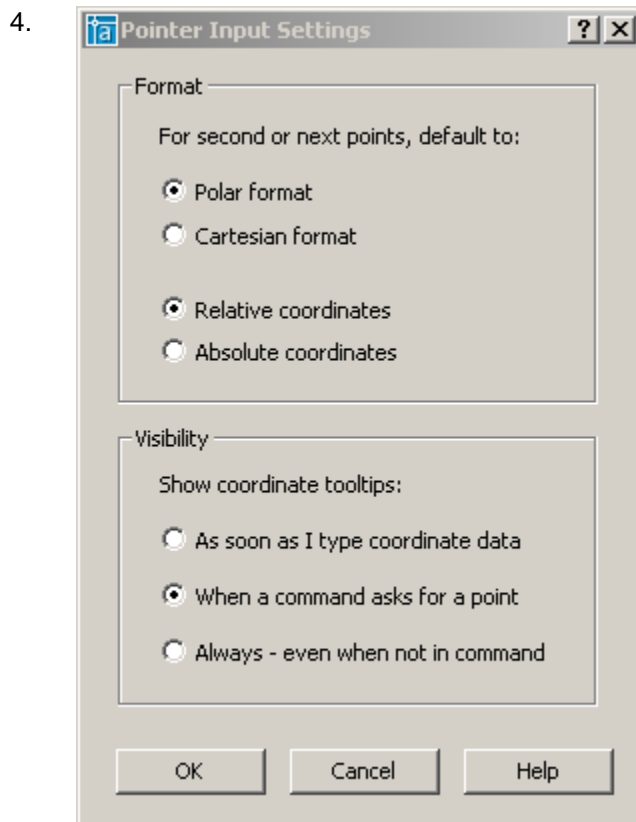
Elise Moss

www.mossdesigns.com

This is an excerpt from the AutoCAD 2006 Fundamentals text available from [Schroff Development Corp.](#)



3. Select the **Settings** button under Pointer Input.

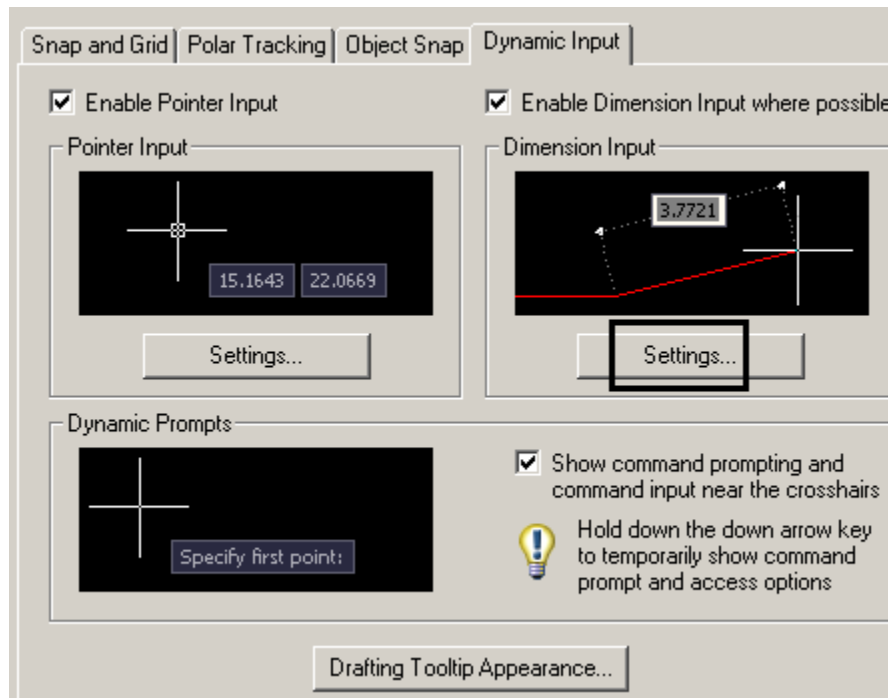


Press
OK.

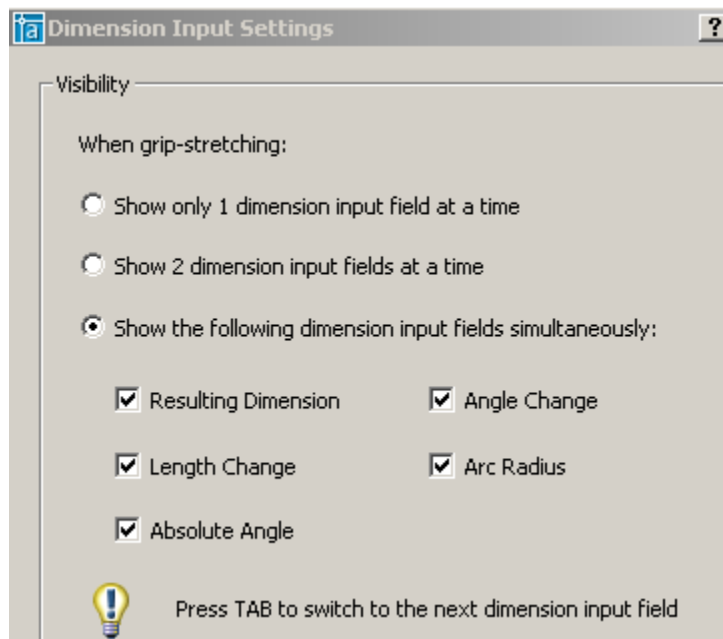
Elise Moss

www.mossdesigns.com

This is an excerpt from the AutoCAD 2006 Fundamentals text available from [Schroff Development Corp.](#)



5. Select the **Settings** button under Dimension Input.

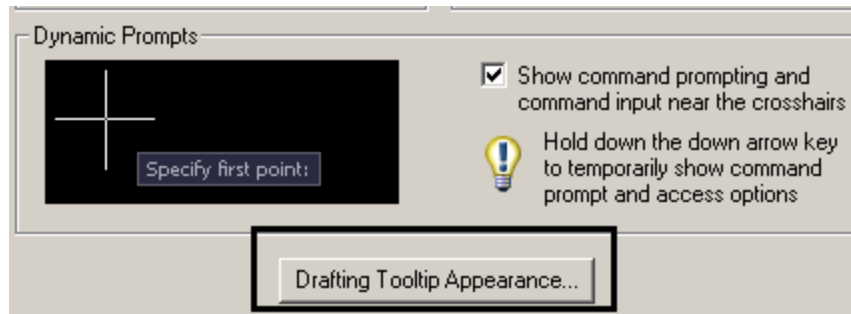


6. Enable **Show the following dimension input fields simultaneously.** Enable all the options. Press **OK**.

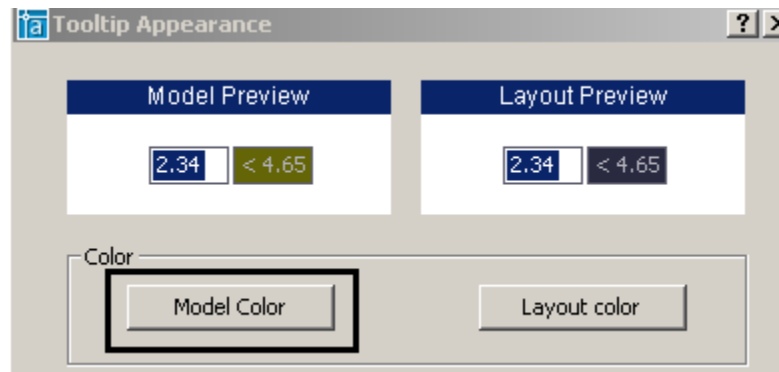
Elise Moss

www.mossdesigns.com

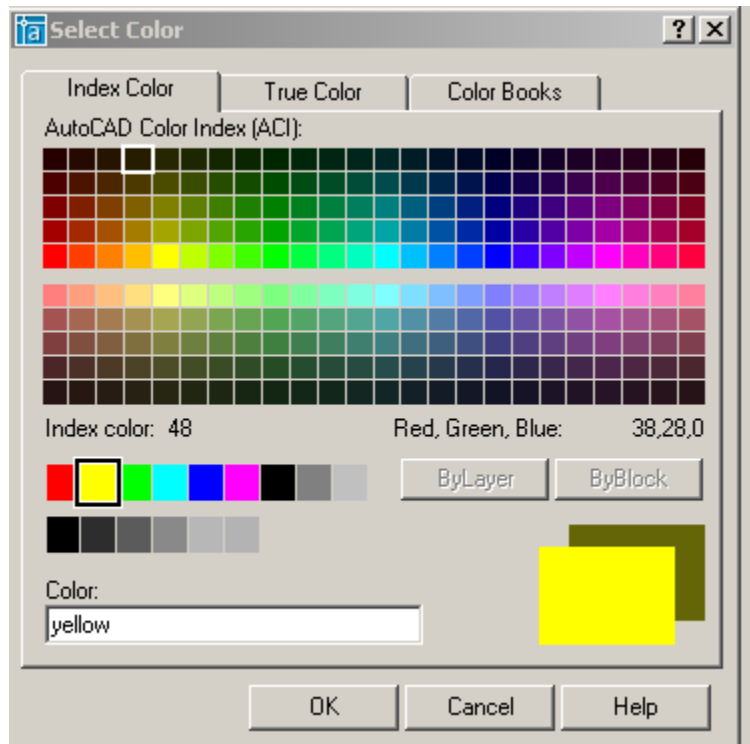
This is an excerpt from the AutoCAD 2006 Fundamentals text available from [Schroff Development Corp.](#)



7. Select **Drafting Tooltip Appearance** under Dynamic Prompts.



8. Select the **Model Color** button.



9. Select the Index Color tab.

Elise Moss

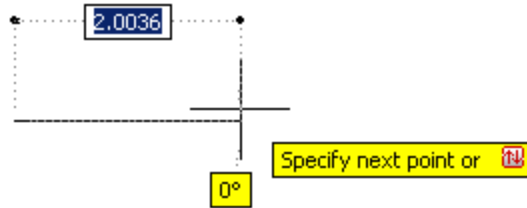
www.mossdesigns.com

This is an excerpt from the AutoCAD 2006 Fundamentals text available from [Schroff Development Corp.](#)

Set the color to **yellow**.

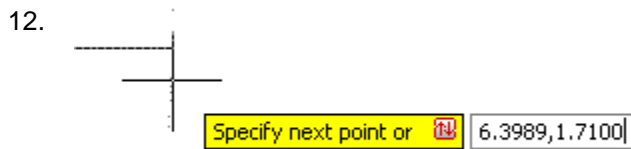
Press **OK**.

10. Press OK until the dialog box is closed.



Note how the display has changed.

11. Pick a point to start the line.



Press the up and down arrows on your keyboards. Note that AutoCAD is keeping track of the coordinates selected.

13. Toggle DYN off.



Note that the cursor dynamic input is now turned off.