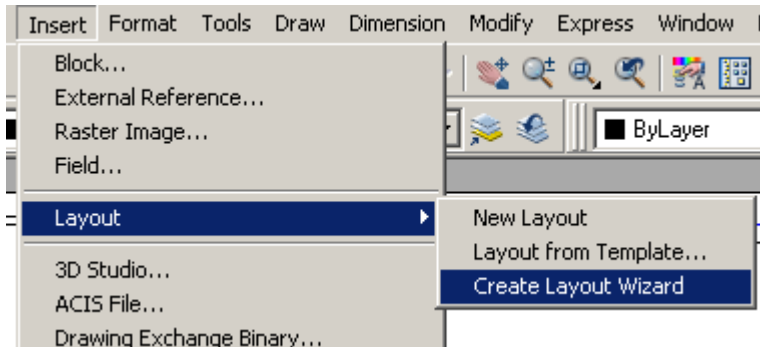


Layout Wizard

Command Locator



<i>Toolbar Menu</i>	none
<i>Pull Down Menu</i>	Insert / Layout / Create Layout Wizard...
<i>Command</i>	layoutwizard
<i>Alias</i>	none
<i>RMB Shortcut Menu</i>	none
<i>Dialog Box</i>	Create Layout

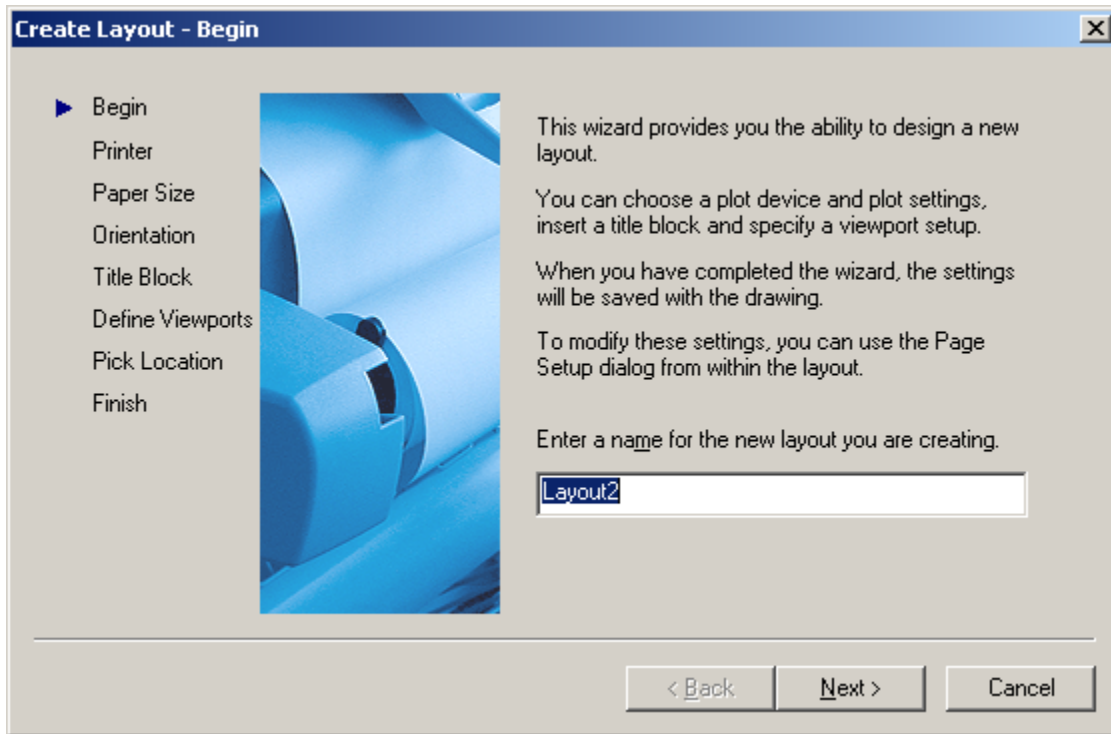


Figure 1 – Layout Wizard Dialog Box

Command Overview

The Layout Wizard quickly steps through all of the settings to create a layout from the beginning. The wizard prompts you for the plotter to associate with the layout, the paper size to use, orientation of the paper, title block to insert and viewports to create. This is all done in a step by step dialog box. Once all of the prompts are responded to, the command creates the layout according to your settings.

General Procedures

1. From the Insert menu, select Layout from Wizard.
2. Type in the name of the new layout in the Create Layout – Begin dialog box and press 'Next>'.
3. Select a plotter/printer from the list in the Create Layout – Printer dialog box and press 'Next>'.
4. Select a paper size and the drawing units in the Create Layout – Paper Size dialog box and press 'Next>'.
5. Select the orientation in the Create Layout – Orientation dialog box and press 'Next>'.
6. Select a title block and type of insertion in the Create Layout – Title Block dialog box and press 'Next>'.
7. Select the viewport setup and scale in the Create Layout – Define Viewports dialog box and press 'Next>'.
8. Set the location of the viewport(s) in the Create Layout – Pick Location dialog box and press 'Next>'.
9. Press 'Finish'.



Use the Layout from Wizard command to create a layout using a step by step interface that is simple to follow.

The templates linked to the Layout Wizard Dialog are located using the Files Options setting for templates. If you do not see any templates files in the dialog, reset the path for the templates on the Files tab in the Options dialog.

Command Exercise

Exercise 1 – Layout Wizard

Drawing Name: [wlayout1.dwg](#)

Estimated Time to Completion: 10 Minutes

Scope

Create an A sized layout using the Layout from Wizard command.

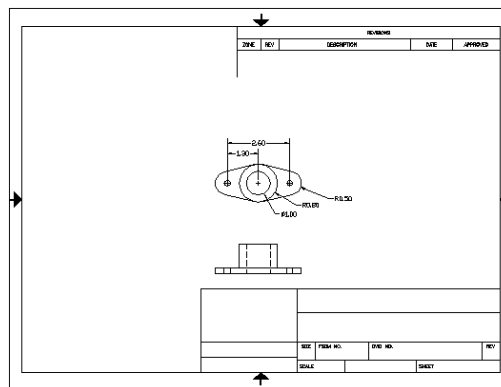
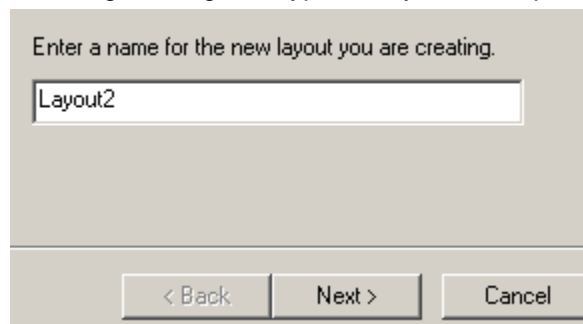


Figure 2 – Layout Wizard Exercise

Solution

1. Invoke the Layout Wizard command.
2. In the Create Layout – Begin dialog box, type in 'Layout2' and press 'Next>'.

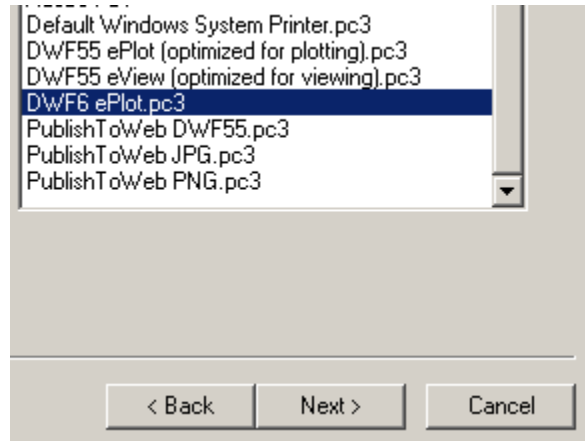


Using the Layout Wizard in AutoCAD 2005

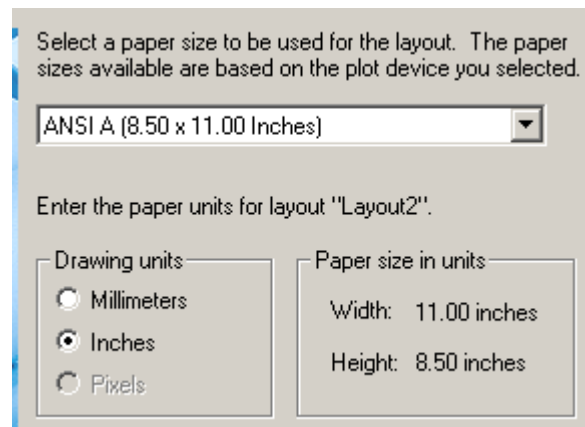
Elise Moss

www.mossdesigns.com

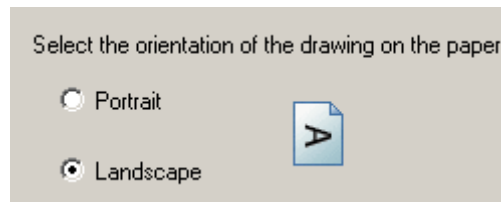
3. In the Create Layout – Printer dialog box, select 'DWF6 ePlot.pc3' and press 'Next>'.



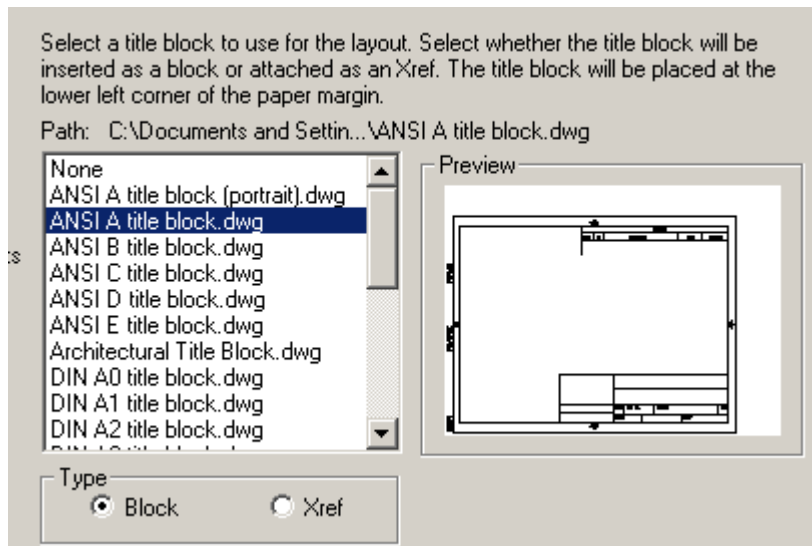
4. In the Create Layout – Paper Size dialog box, select 'Letter (8.50 x 11.00 Inches)' from the drop-down list and Inches for units and press 'Next>'.



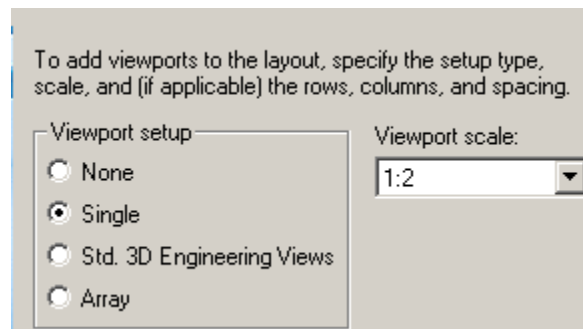
5. In the Create Layout – Orientation dialog box, select 'Landscape' and press 'Next>'.



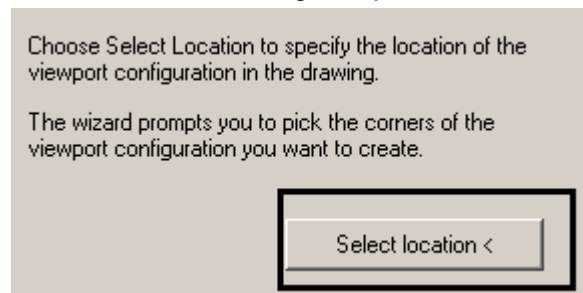
6. In the Create Layout – Title Block dialog box, select 'ANSI A title block.dwg' from the list, select 'Block' for the type and press 'Next>'.



7. In the Create Layout – Define Viewports dialog box, select a Single Viewport Setup, select 1:2 from the scale drop-down list and press 'Next>'.



8. In the Create Layout – Pick Location dialog box, press 'Select location <'.



9. *Specify first corner:* – Select a corner of the viewport to create just inside the title block.
10. *Specify opposite corner:* – Select the opposite corner of the viewport to create.
11. In the Create Layout – Finish dialog box, press 'Finish'.