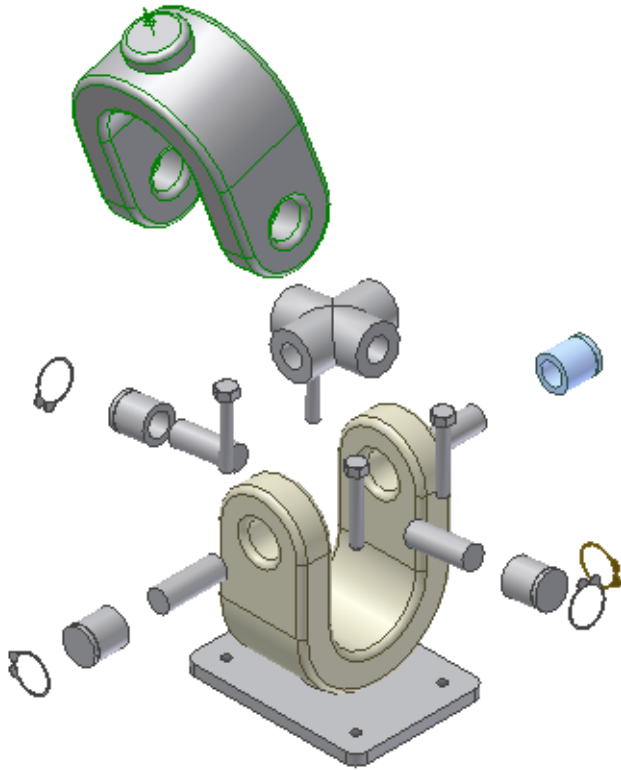


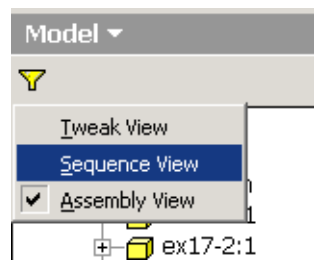
Creating Camera Views in an Inventor Presentation

By Elise Moss

A common question many users have is how to seamlessly switch camera views in a presentation animation.



Start by creating the desired exploded view.



In the browser, left click on the Filter icon.

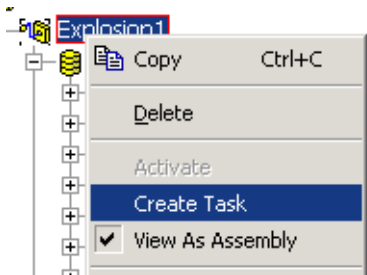
We have three views available for the Presentation Browser: Tweak View, Sequence View, and Assembly View. Enable the Sequence View.



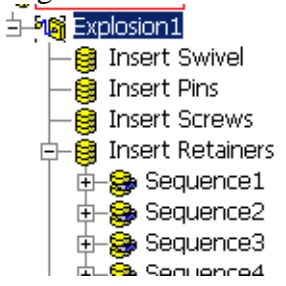
Initially, you have a single task.

You want to divide your assembly into several tasks.

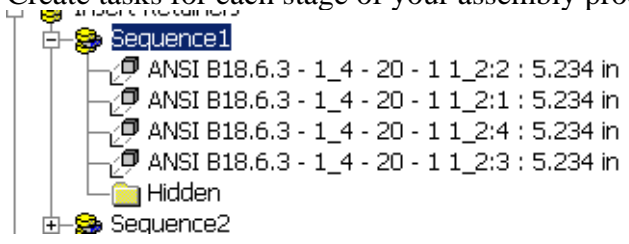
You want to rename your tasks to something meaningful for you.



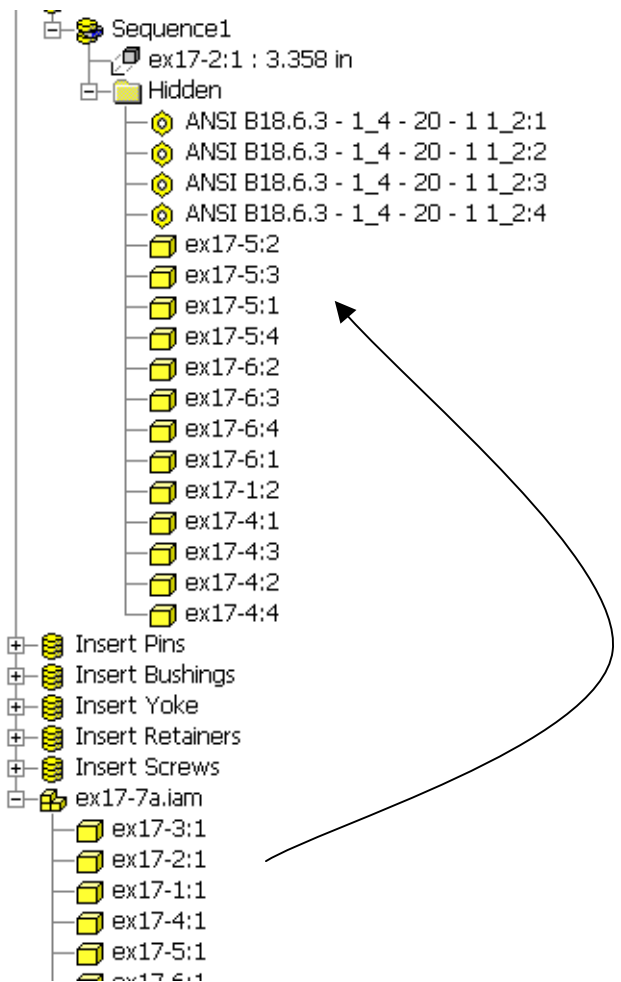
Highlight the Explosion1.
Right click and select 'Create Task'.



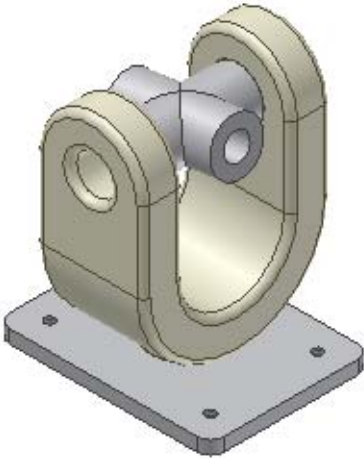
Create tasks for each stage of your assembly process.



Each sequence lists the tweaks applied to the components.
Move the sequences into the correct task folders.

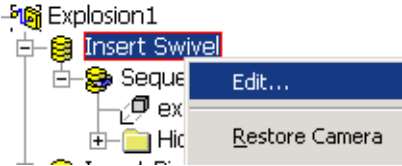


You can also turn off the visibility of components in specific sequences by moving them under the Hidden folder. Simply drag them from the assembly list into the hidden folder for that sequence.

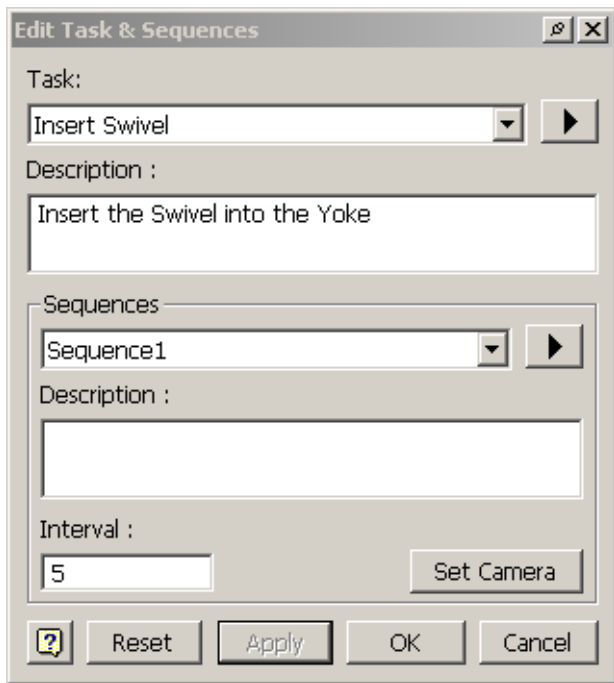


To check how it looks, use the Advance by One Tweak tool in the Animation dialog. You see the components in the hidden folder are not visible in that step.

To change the camera view, set the view as desired.



Highlight the task.
Right click the task and select 'Edit'.



You can add a description to the Task.

You can change the Interval so you can speed up and slow down individual tasks.

Press the 'Set Camera' button to apply the current view.

Press 'Apply' and 'OK'.

Experiment with different ways of controlling views and component visibility.

Also, don't forget to turn off the 3D Coordinate Display (in Options).