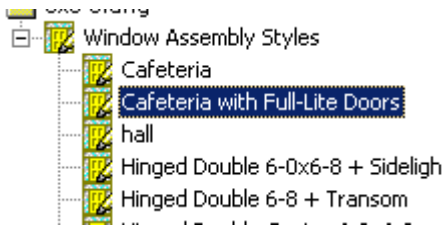


Adding Doors to Window Assembly Styles

Estimated Time: 10 minutes

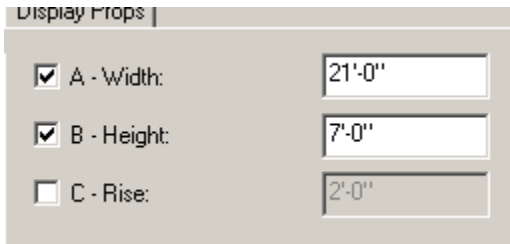
This exercise reinforces the following skills:

- Window Assembly Styles
- Convert Linework to Window Assembly Style
- Edit Window Assembly Style

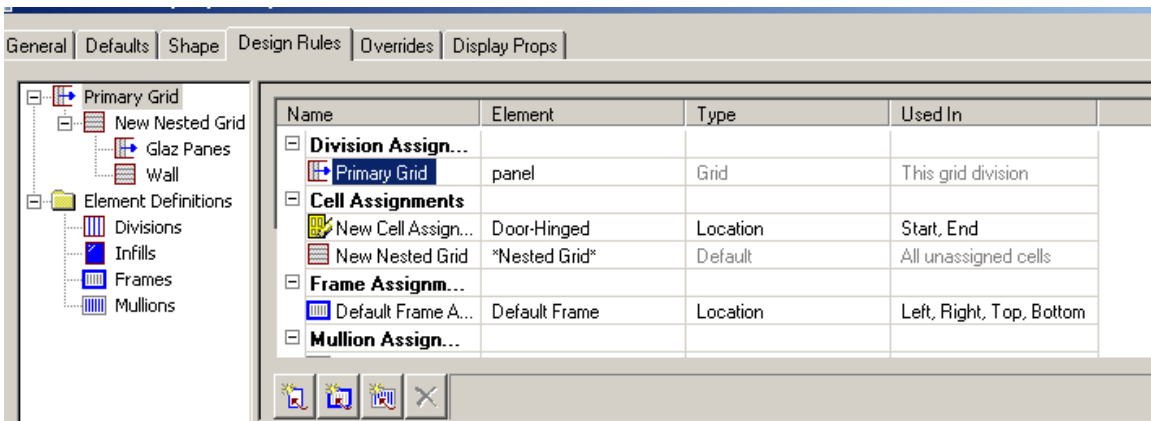


Go to Design→Window Assemblies→Window Assembly Styles.

Create a new style and name it 'Cafeteria with Full-Lite Doors'.

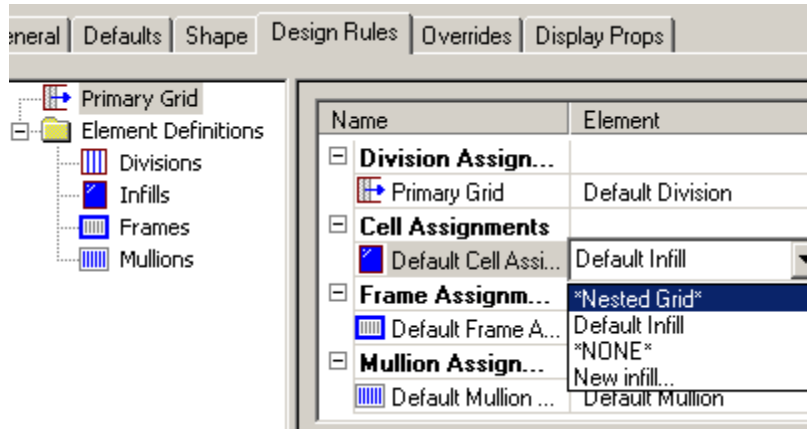


Select the Defaults tab.
Set the Width to 21'-0".
Set the Height to 7'-0".

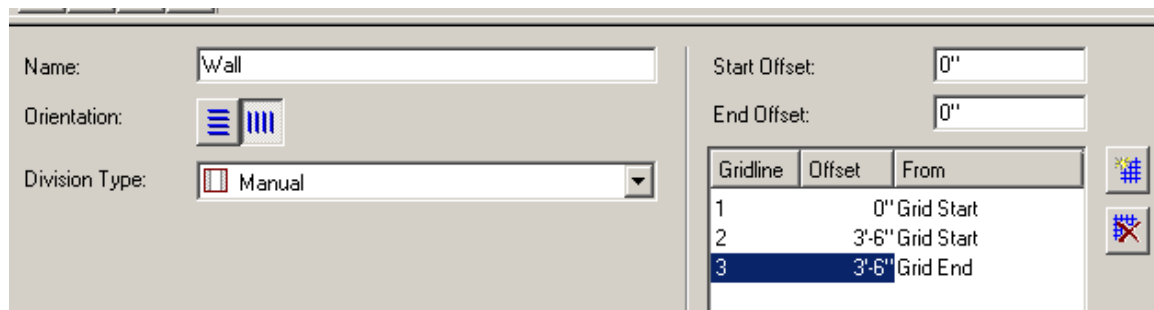


When you are completed with your definition, this is how your design rules should appear.

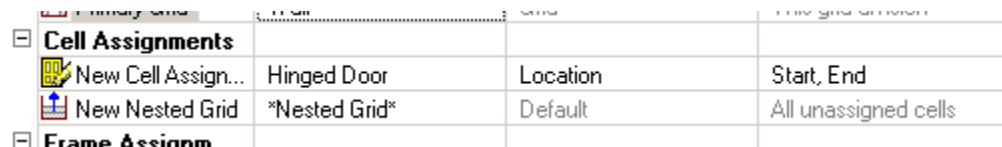
EXCERPT FROM ADT R3.3 INTERMEDIATE
 AVAILABLE FROM SCHROFF AT www.sdccad.com
 ELISE MOSS



Highlight the Primary Grid in the left pane. Under Cell Assignments, select the Nested Grid from the drop-down.

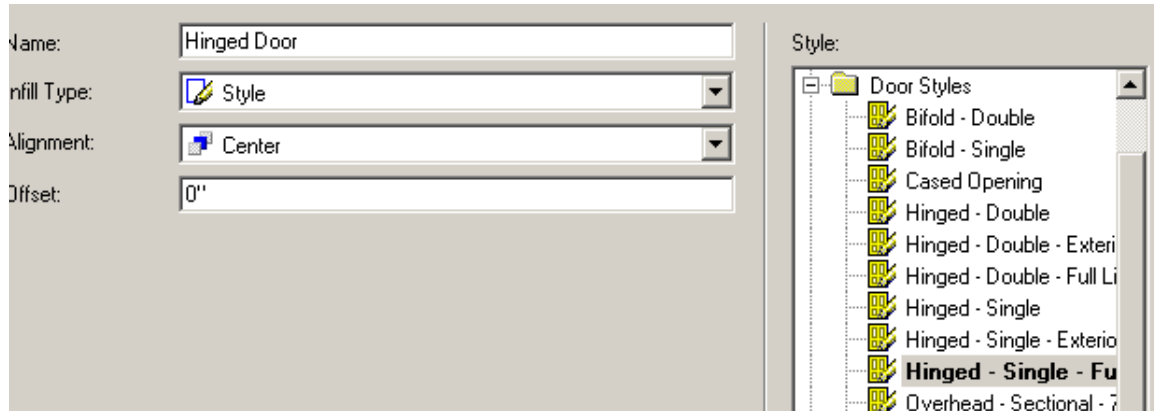


- Highlight the Primary Grid.
- Change the Name to Wall.
- Set the Orientation to Vertical.
- Set the Division Type to Manual.
- Add three Gridlines.
- Set Gridline1 with an Offset of 0" From Grid Start.
- Set Gridline 2 with an Offset of 3'-6" From Grid Start.
- Set Gridline 3 with an Offset of 3'-6" From Grid End.

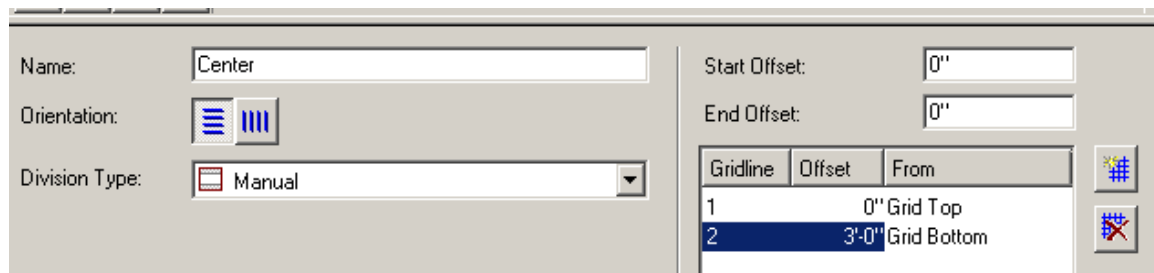


- Under Cell Assignments, add a New Cell.
- Set the first cell assignment to Hinged Door and assign it to the start and end cells.
- Set the second cell to Nested Grid.

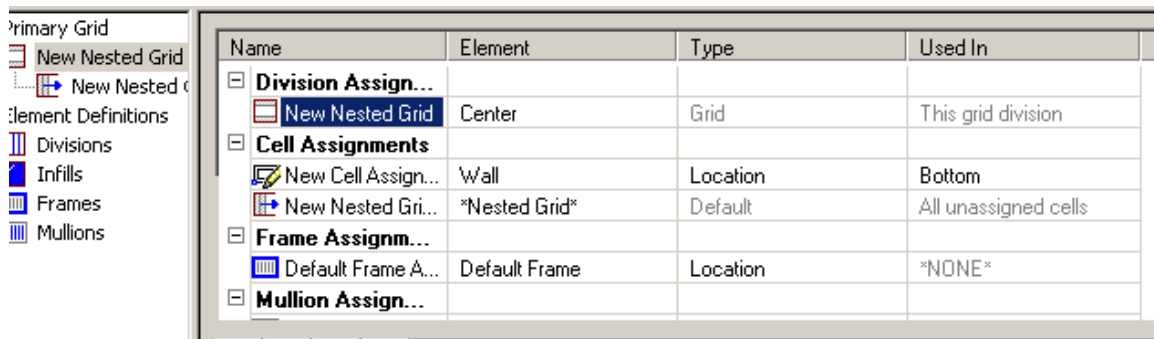
EXCERPT FROM ADT R3.3 INTERMEDIATE
 AVAILABLE FROM SCHROFF AT www.sdccad.com
 ELISE MOSS



For the cell assignment of the Hinged Door, set the Infill Type to Style.
 Then select the Hinged-Single-Full Lite under Door Styles.



Highlight the Nested Grid under the Primary Grid.
 Change the Name to Center.
 Set the Orientation to Horizontal.
 Set the Division Type to Manual.
 Add two Gridlines.
 Set Gridline 1 to Offset of 0" From Grid Top.
 Set Gridline 2 to Offset of 3'-6" From Grid Bottom.

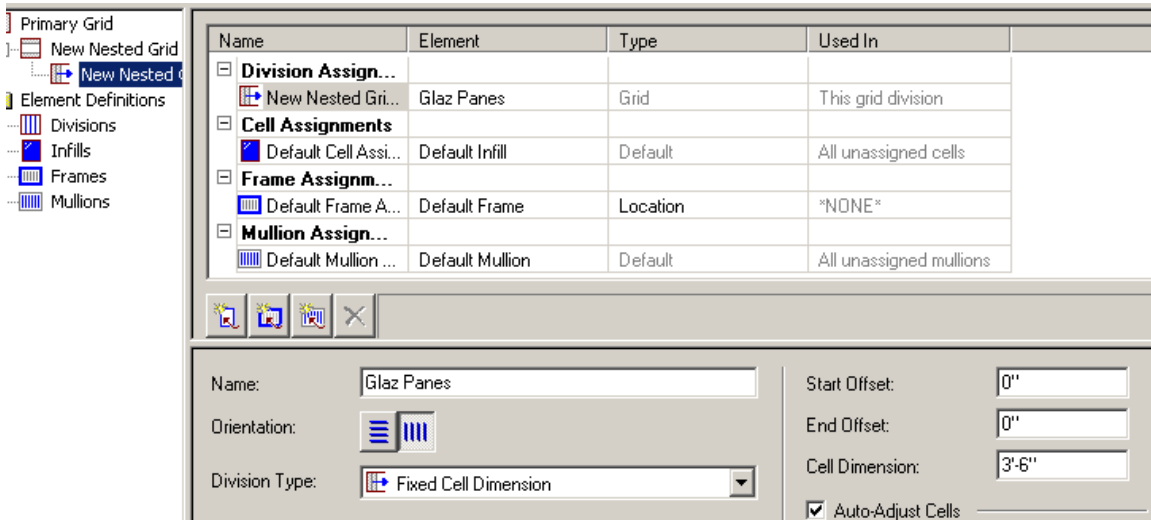


Add a second new cell assignment so there are two cell assignments under the second Nested Grid.
 Set the first cell division, and change the name to Wall and set the Location to Bottom.
 Set the second cell division to a Nested Grid.

EXCERPT FROM ADT R3.3 INTERMEDIATE
 AVAILABLE FROM SCHROFF AT www.sdccad.com
 ELISE MOSS



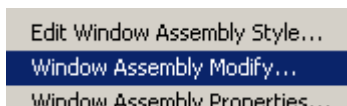
For the first cell division called Wall, set the Infill Type to Style and set it to AEC Polygon Styles ->Standard.



Highlight the second nested grid.
 Change the Name to Glaz Panes.
 Set the Orientation to Vertical.
 Set the Default Cell Assignment to Default Infill.
 Set the Division Type to Fixed Cell Dimension.
 Set the Cell Dimension to 3'-6".

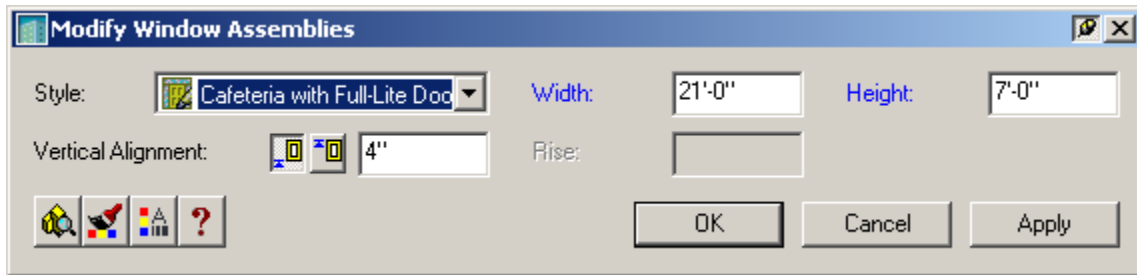
Press 'OK'.

Pick one of the existing hall windows with doors.



Right click and select 'Window Assembly Modify'.

EXCERPT FROM ADT R3.3 INTERMEDIATE
AVAILABLE FROM SCHROFF AT www.sdacad.com
ELISE MOSS



Set the Style to Cafeteria with Full-Lite Doors.
Set the Vertical Alignment to 4" from floor line.
Press 'OK'.

We now have a window assembly that includes doors and a wall panel as a single assembly.

Save the file as ex6-8.dwg.