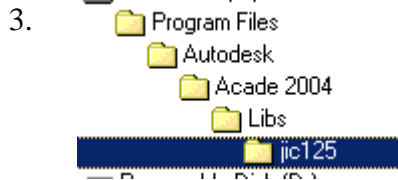


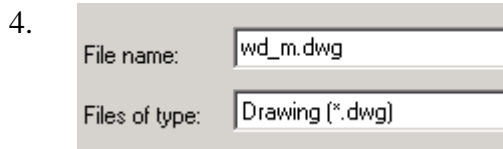
Setting up Layer Properties in AutoCAD Electrical

Layer Properties are controlled in AutoCAD Electrical in the hidden block that is inserted into any Electrical drawing file.

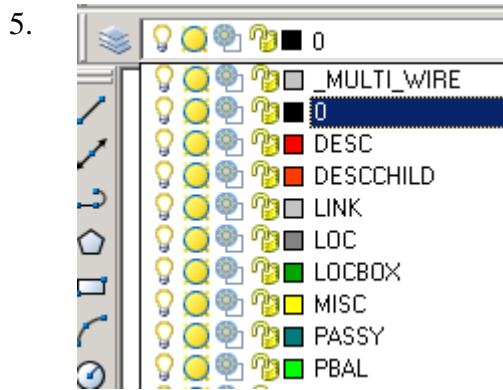
1. Start a NEW drawing in AE.
2. Select the **Insert Block** tool.



Browse to the jic125 folder under *Program Files/Autodesk/Acade <version>/Libs*.

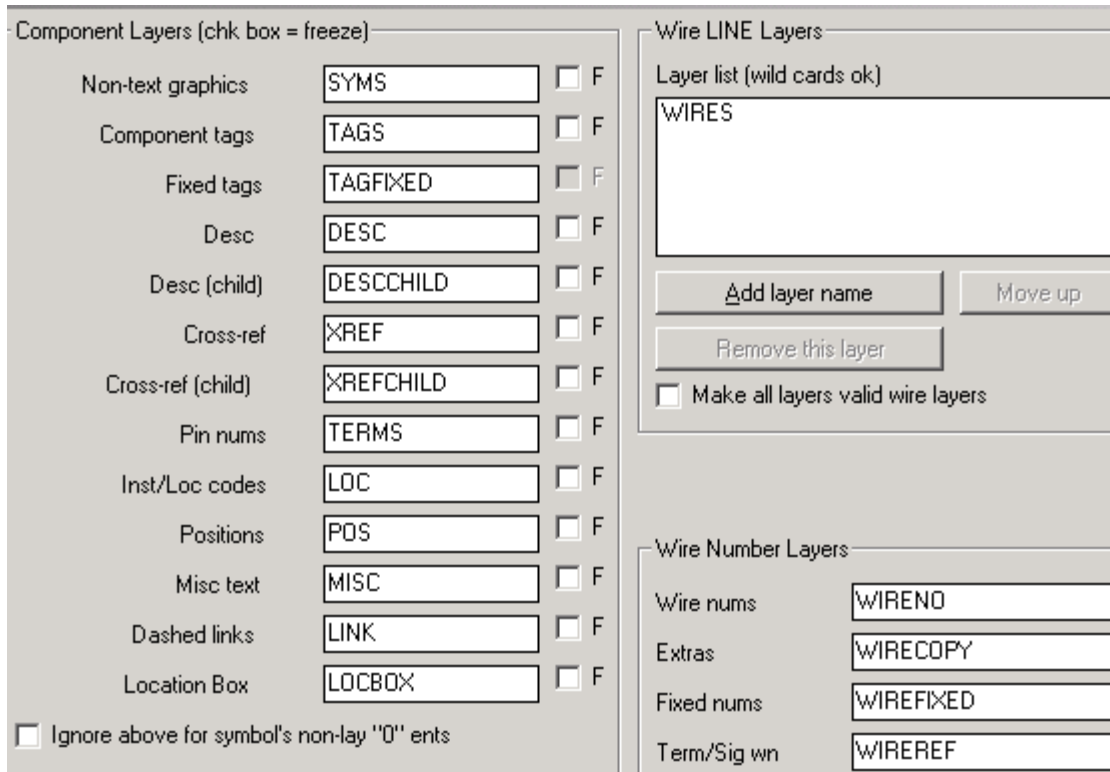


Locate the *WD_M.DWG* file and press Open.



You see that several layers have been created in your drawing. These are the layer properties used by AE when inserting components, wires, etc.

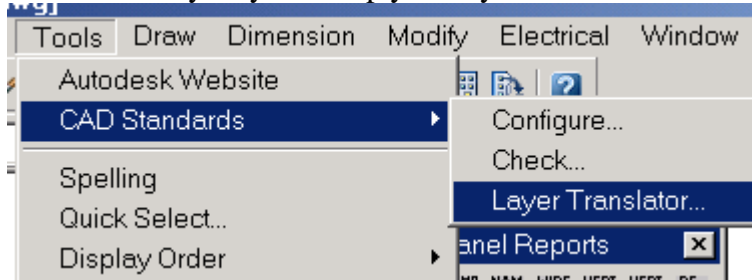
6.



The layer names are listed in the Config Dialog. You can use this as a guide when setting up your own layers.

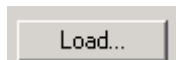
7.

A fast and easy way to set up your layers would be to use the Layer Translator utility.



Go to Tools→CAD Standards→Layer Translator.

8.



Select the **Load** button.

9.


Locate a file you use that has the layers you want to use as the standard layers in your projects.

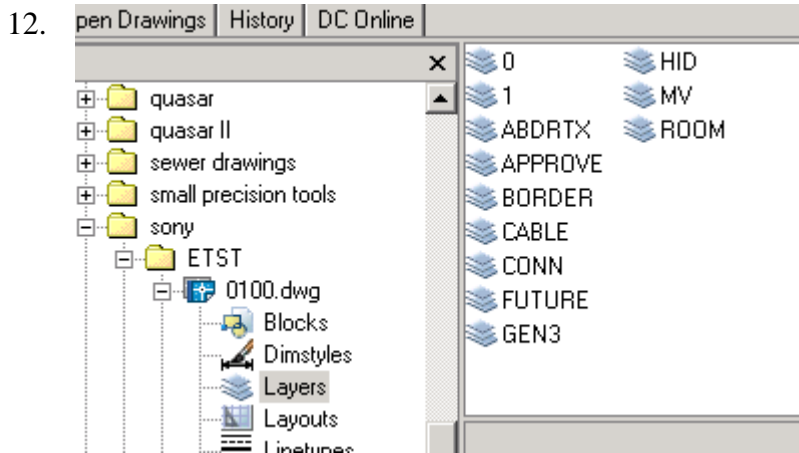
10.

Layer Translation Mappings						
Old Layer Name	New Layer Name	Color	Linetype	Linewei...	Plot style	
TAGS	0	3	CONTI...	Default	ByColor	
PTAG	0	3	CONTI...	Default	ByColor	
WIRENO	CABLE	2	CONTI...	Default	ByColor	
DESC	CONN	1	CONTI...	Default	ByColor	

As an example, I have mapped the layers as shown.

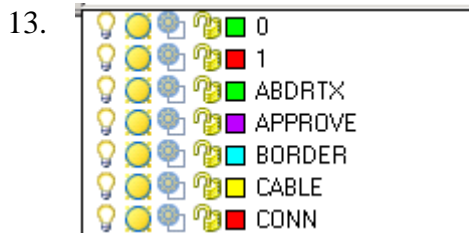
Press **Translate**.

11.  Launch the Design Center.




Locate the Layers folder for the drawing you are using for your standards.

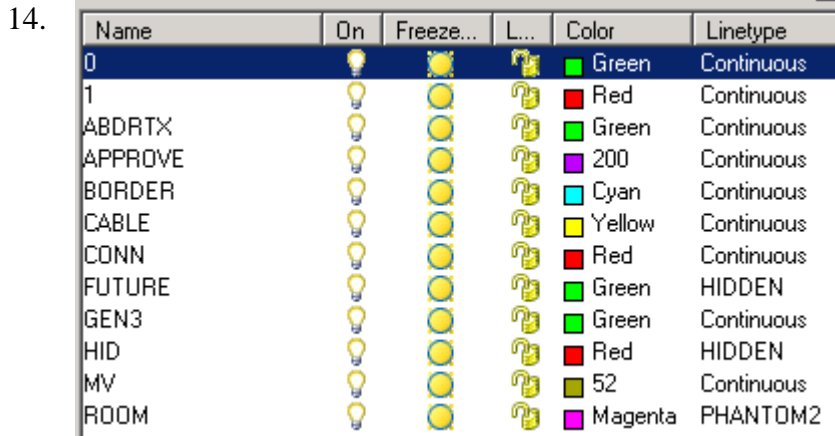
Drag and drop the layer names into the drawing file. Duplicate layer names will be ignored.



You see the standard layers have been added to your file.


12.  Bring up the Layer Manager.


13. Delete any layers you don't want.



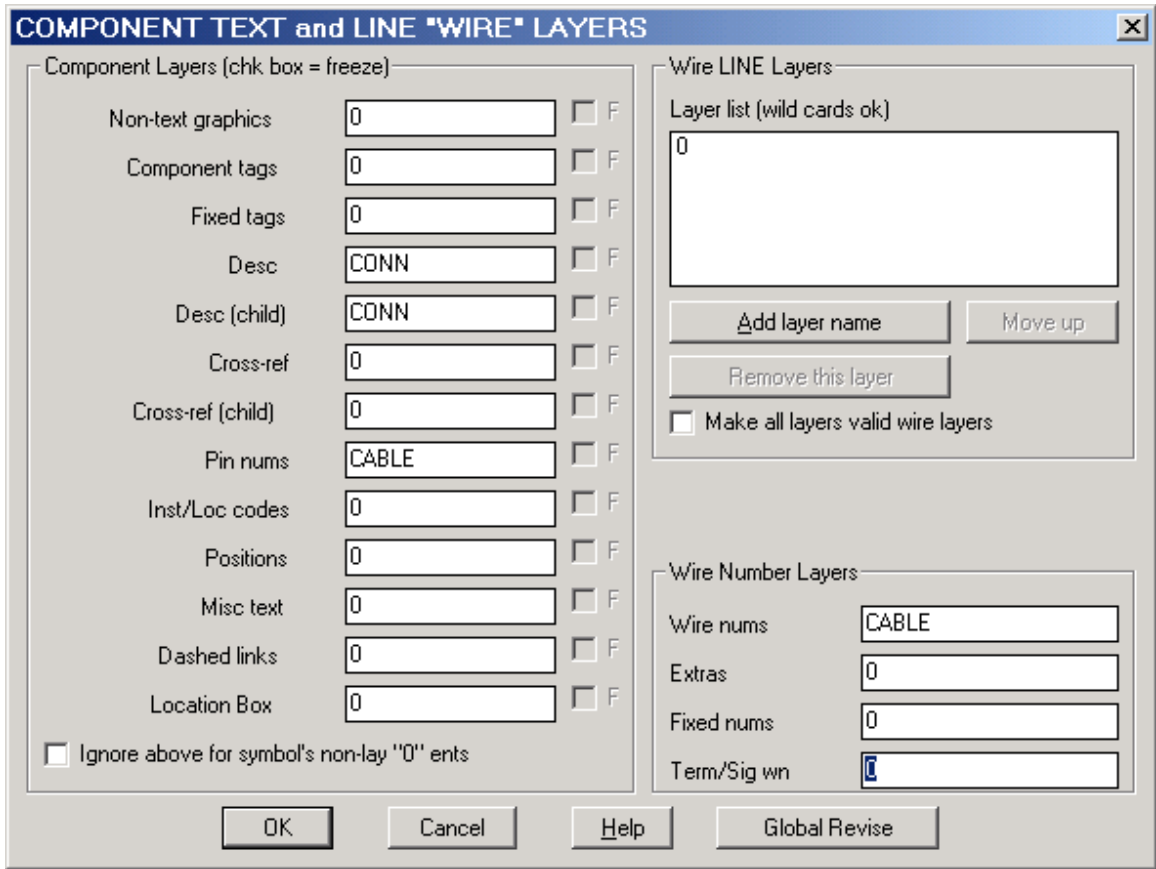
Verify that the remaining layers have the desired properties.

Press **OK** to close the Layer Manager.

15.  Select the **Config Dwgs** tool.

16.  Select the **Setup** button next to Layers.

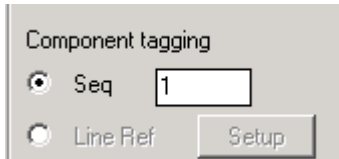
17.



In this dialog you assign which components in your drawing will be placed on which layers.

Press **OK**.

18.

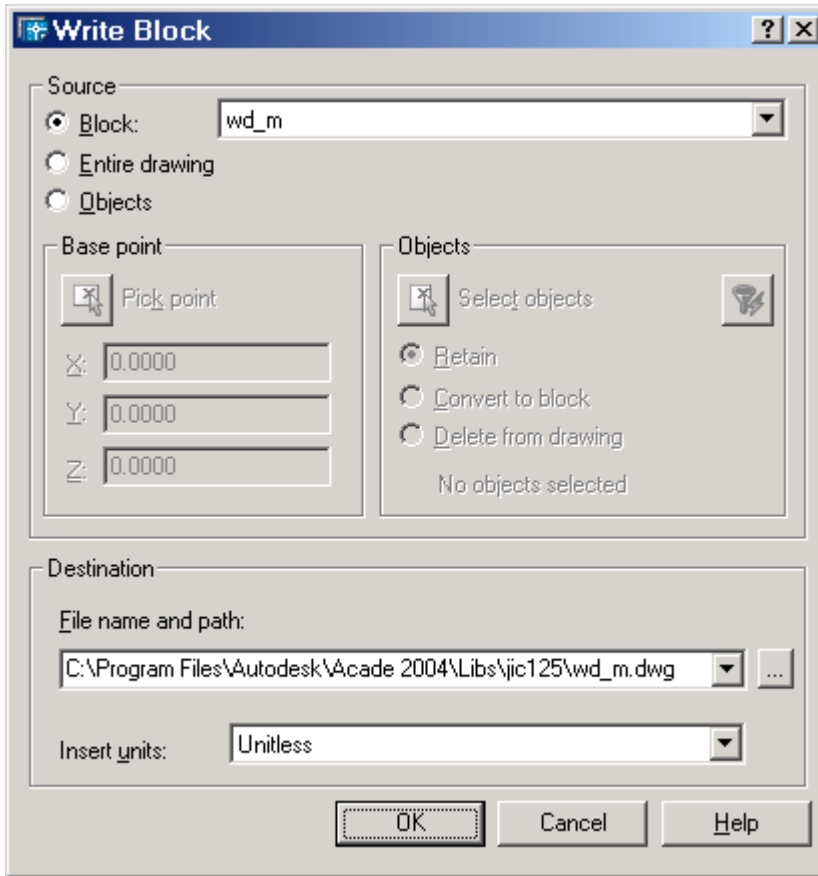


Set the Component tagging to **Sequential** and the numbering to start at **1**.

Press **OK**.

19. Type **WBLOCK** on the command line.

20.



Enable **Block**.

Select the **wd_m** block from the drop down.

Set the path back to the *jic125* folder.

Press **OK**.

You will be prompted if you want to replace it.

Press **Yes**.