

ADT2005 Fundamentals

Elise Moss

Available from Schroff Development in July 2005

Keynotes are notes placed in your layout to identify materials or construction methods. ADT 2005 comes with a database of standard keynotes you can use in your layouts. In order to create or modify a keynote database, you need Microsoft Access installed on your computer. ADT 2005 comes with two types of keynotes: reference keynotes and sheet keynotes. The keynotes provided are based on the National CAD Standards (www.nationalcadstandards.org). Each keynote is defined with a keynote ID number and the actual note.

In Mechanical Engineering, keynotes are usually used to specify the tolerancing standard, the material, the finish, any silkscreen instructions, and fabrication instructions. In Architectural drafting, keynotes serve a similar purpose. They may include manufacturer instructions on how to install a window, instructions on positioning of bolts, instructions on how to seal flashing around a chimney, etc.

When you place a reference keynote, the reference number is automatically assigned, regardless of what sheet it is placed on. Sheet keynotes reference the current sheet number.

Exercise 7-5:

Creating a Keynote Database

Drawing Name: AecKeynotes-Template.mdb

Estimated Time: 20 minutes

This exercise reinforces the following skills:

- Using Microsoft Access
- Keynote Databases

1. ADT comes with a template database you can use as the starting point for your own custom keynote database.

In order to complete this exercise, you need to have Microsoft Access installed. If you do not have Microsoft Access, you can download the database file from the publisher's website.

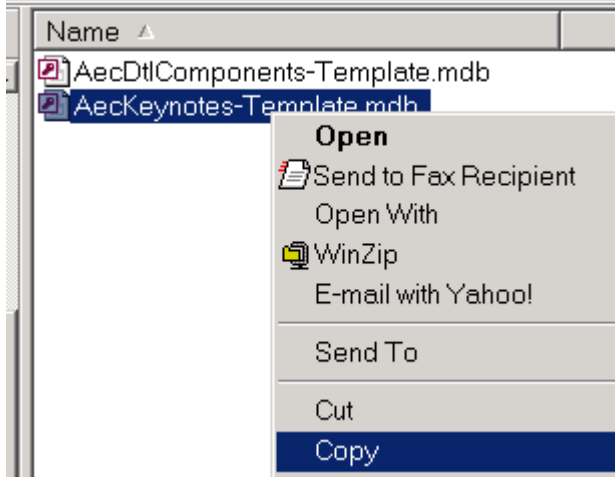
In Windows Explorer, browse to *C:\Documents and Settings\All Users\Application Data\Autodesk\ADT 2005\enu\Template\Details and Keynotes*.

ADT2005 Fundamentals

Elise Moss

Available from Schroff Development in July 2005

2.

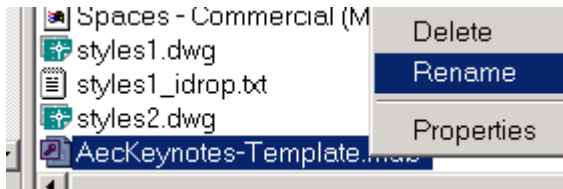


Select the *AecKeynotes-Template.mdb* file.

Right click and select **Copy**.

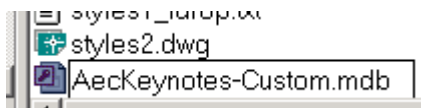
Browse to the folder where you are working. Right click and select **Paste**.

3.



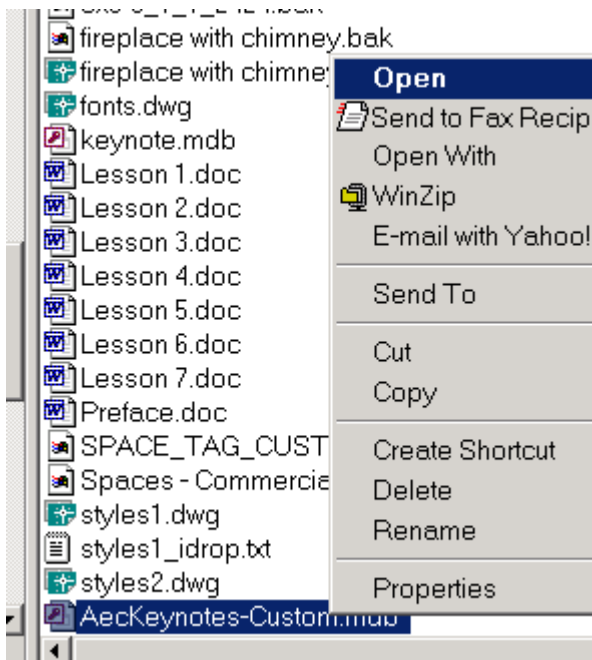
Locate the copied database file. Right click and select **Rename**.

4.



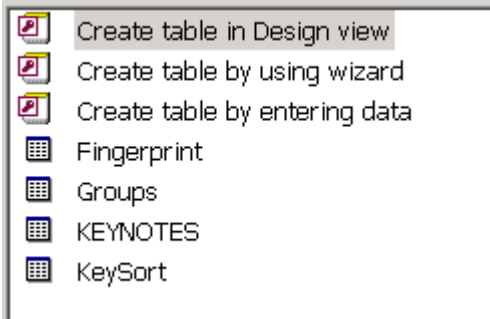
Rename the file to *AecKeynotes-Custom.mdb*.

5.



Select the *AecKeynotes-Custom.mdb* file and press **Open**.

6.



You see that Fingerprint, Groups, keynotes, and Keysort tables have already been defined.

7.



Highlight the Fingerprint group.
Right click and select **Open**.

The Fingerprint table identifies the keynote database and contains five fields:

GUID	The GUID (Global Unique Identifier) is a unique ID assigned to the keynote database. You do not need to fill in this field. It will automatically be filled in when you load the database.
TYPE	This must contain the word Keynote . (If you are defining a detail component database, then this field must hold the word Component .)
Author	The name of the database creator
DisplayName	This is the name of the database that will be displayed in the dialogs.
Description	A description of the database contents (this is an optional field)

Fingerprint : Table						
	GUID	Author	ID	Type	DisplayName	Description
▶		Elise Moss	1	Keynote	Schroff	keynotes
*			0			

8.

- Leave the GUID field empty.
- Enter your name in the Author field.
- Enter **Schroff** in the DisplayName Field.
- Enter **Keynotes** in the Discription field.
- Close the table.
- When prompted to save the changes to the table, press **OK**.

9.



Highlight **Groups**.
Right click and select **Open**.

ADT2005 Fundamentals

Elise Moss

Available from Schroff Development in July 2005

10. The Groups table has five fields.

ID	This field is a sequential number. The ID must be a unique number. Once entered, this number should not be modified. This is a mandatory field.
Parent	This field identifies the group that is the parent of the group identified in the Group field.
Group	This field identifies a particular division, group, or subgroup. The groups are defined by the CSI Standard.
Description	This is the descriptive name of the group.
Modified	When the box is enabled, it means that the user changed the original contents. This is so when you install updates to ADT, your changes will not be overwritten.

ID	Parent	Group	Description	MODIFIED
0 \ - *	\	*		<input type="checkbox"/>
1 \ - *	A	Substructure		<input checked="" type="checkbox"/>
2 \ - *	B	Shell		<input checked="" type="checkbox"/>
3 \ - *	C	Interiors		<input checked="" type="checkbox"/>
4 \ - *	D	Services		<input checked="" type="checkbox"/>
5 \ - *	E	Equipment & Furnishings		<input checked="" type="checkbox"/>
6 \ - *	F	Special Construction & Demolition		<input checked="" type="checkbox"/>
7 \ - *	G	Building Sitework		<input checked="" type="checkbox"/>
0 \ - *				<input type="checkbox"/>

11. First define the root groups – these are the top hierarchy for your keynote groups.

ID	Parent	Group	Description	MODIFIED
0 \ - *	\	*		<input type="checkbox"/>
1 \ - *		A	Substructure	<input checked="" type="checkbox"/>
2 \ - *		B	Shell	<input checked="" type="checkbox"/>
3 \ - *		C	Interiors	<input checked="" type="checkbox"/>
4 \ - *		D	Services	<input checked="" type="checkbox"/>
5 \ - *		E	Equipment & Furnishings	<input checked="" type="checkbox"/>
6 \ - *		F	Special Construction & Demolition	<input checked="" type="checkbox"/>
7 \ - *		G	Building Sitework	<input checked="" type="checkbox"/>
12 B - Shell		B30	Roofing	<input checked="" type="checkbox"/>
13 C - Interiors		C10	Interior Construction	<input checked="" type="checkbox"/>
37 B - Shell		B2010	Exterior Walls	<input checked="" type="checkbox"/>
38 C - Interiors		C1020	Interior Doors	<input checked="" type="checkbox"/>
43 E - Equipment & Furnishings		E1090	Other Equipment	<input checked="" type="checkbox"/>
155 B - Shell		B2034	Overhead Doors	<input checked="" type="checkbox"/>
171 B - Shell		B3016	Gutters & Downspouts	<input checked="" type="checkbox"/>
196 C - Interiors		C2011	Regular Stairs	<input checked="" type="checkbox"/>
0 \ - *				<input type="checkbox"/>

12. Fill in the fields as shown.
Keep the Parent field blank.

ADT2005 Fundamentals

Elise Moss

Available from Schroff Development in July 2005

13.

12	B - Shell	B30
13	C - Interiors	C10
37	B - Shell	B2010
38	C - Interiors	C1020
43	\ - *	E1090
155	A - Substructure	B2034
171	B - Shell	B3016
196	C - Interiors	C2011
0	D - Services	
	E - Equipment & Furnishings	



Save the Groups table.

You can now access the drop-down list under Parent to assign the correct group to each Parent.

Save again and close the table.



Highlight **KEYNOTES**.

Right click and select **Open**.

The Keynotes table has five fields:

ID	This is a unique, sequential number that identifies the row number. This number should not be changed. The Keynote ID is linked to the GUID of the database.
Parent Group	This field identifies the parent group of the keynote.
Key	This field specifies the value from the Group field.
Note	This is the actual text for your keynote
Modified	When the box is enabled, it means that the user changed the original contents. This is so when you install updates to ADT, your changes will not be overwritten.

ID	Parent Group	Key	Note	MODIFIED
12	B-Shell	B30.A1	Wood Shake	<input checked="" type="checkbox"/>
62	B-Shell	B2010.B46	8" CMU Wall 1.5" Rigid Insulation 2" Air 4" Brick-Soldier Course	<input checked="" type="checkbox"/>
77	E-Equipment & Furnishings	E1090.A1	Fireplace with Chimney Brick- Soldier Course	<input checked="" type="checkbox"/>
141	B-Shell	B2020.A2	Arched Picture Window	<input checked="" type="checkbox"/>
186	B-Shell	B2020.B1	2'-10" x 4'-10" Single Casement	<input checked="" type="checkbox"/>
193	B-Shell	B2020.B3	Double Casement	<input checked="" type="checkbox"/>
375	C-Interiors	C1010.C4	4" Stud Partition 5/8" Gypsum Both Sides	<input checked="" type="checkbox"/>
393	C-Interiors	C1020.A1	Single Hinged Door	<input checked="" type="checkbox"/>
419	C-Interiors	C1020.C1	Single Bifold Door	<input checked="" type="checkbox"/>
0	\ - *			<input type="checkbox"/>

15. Fill in the fields as shown.

The Parent Group uses the drop-down list you created in the Groups Table.

The Key field allows you to enter data.

The Note field is the actual text for your note.

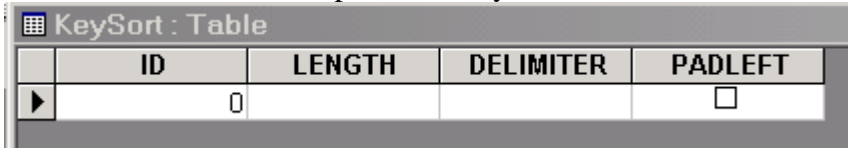
Be sure to enable the Modified field.

Save and close.



Highlight the **Keysort** table.

Right click and select **Open**.



This table allows you to control the way keynotes are sorted for display in the Select Keynote dialog box.

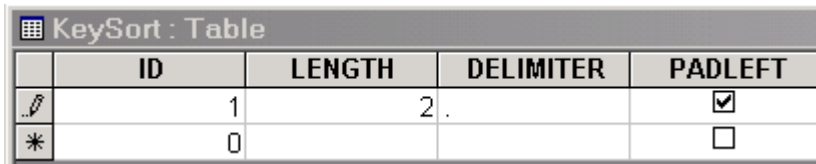
The keysort table has the following fields:

ID	This field has no specified length. The ID is the number used to identify the keynote, i.e. 09350.A1 (Notice that we drop the leading alpha character.)
LENGTH	This determines the keys on a character by character basis. This helps to make the sorting work properly. For example, we are all familiar with the way Windows will sort a sequence as follows: 1, 2, 20, 21, 22, 23, 24, 3, 31, 4....If you set the length to 2, the sorting will take the first two digits into consideration for sorting purposes. That way the keys will be sorted properly. If your highest value key is two digits, set the length to 2. If your
DELIMITER	This should be a period (.) as a period is used in the keynote ID.,
PADLEFT	Enable this field to ensure that the keynotes are sorted properly.



TIP: If you prefer, you do not have to create a hierachal keynote list. Instead, use the root parent group \-* for all keynotes.

17.



In the ID field, enter **1**.

In the LENGTH field, enter **2**.

In the DELIMITER field, enter a period “.”

Enable PADLEFT.

Save and close the table.

18. You are now done defining your custom database.
Close Access.

Exercise 7-6:

Adding a Keynote Database to a Project

Drawing Name: ex6-5.dwg

Estimated Time: 15 minutes

This exercise reinforces the following skills:

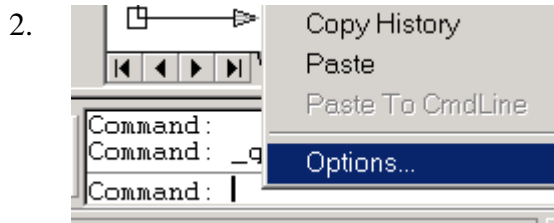
ADT2005 Fundamentals

Elise Moss

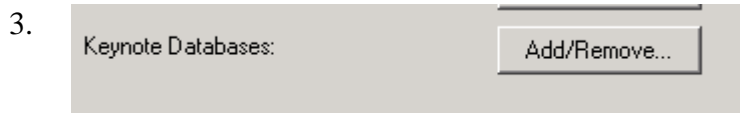
Available from Schroff Development in July 2005

- ❑ Title blocks
- ❑ Attributes
- ❑ Layouts

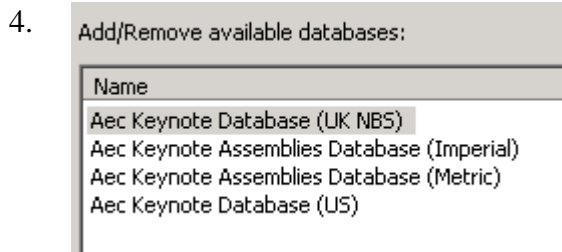
1. Open *ex6-5.dwg*.



Place your cursor on the command line. Right click and select **Options** from the shortcut menu.



Select the **AEC Content** tab. Select the **Add/Remove** button from the Keynote Databases option.



Several keynote databases have already been loaded.

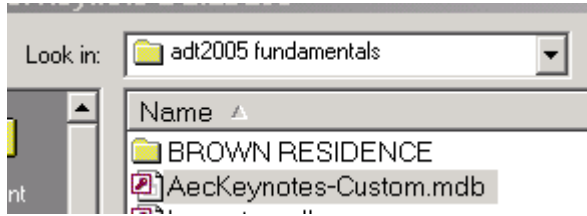
Select **Add**.

ADT2005 Fundamentals

Elise Moss

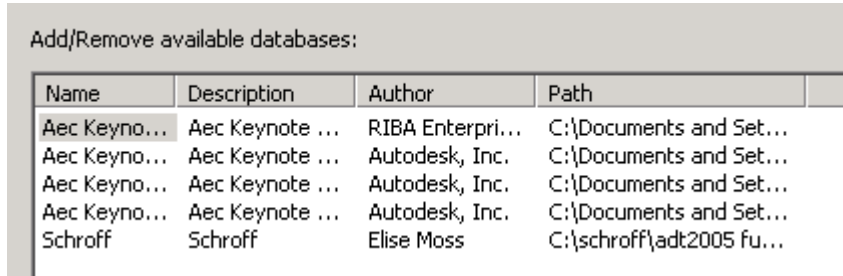
Available from Schroff Development in July 2005

5.



Browse to your folder and select the *AecKeynotes-Custom.mdb* file that was created in the previous exercise..

6.



Note how the name and description are displayed.

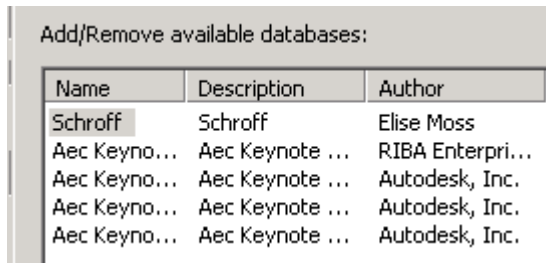
These values were taken from the Fingerprint table you created.

7.



Highlight your custom keynote database and use the **Move Up** button to move this database to the top line on the list.

8.



Press **OK**.

9. Press **Apply** and **OK**.

10. Save as *ex7-5.dwg*.