

Exercise 7-3: Creating an Opening Tag

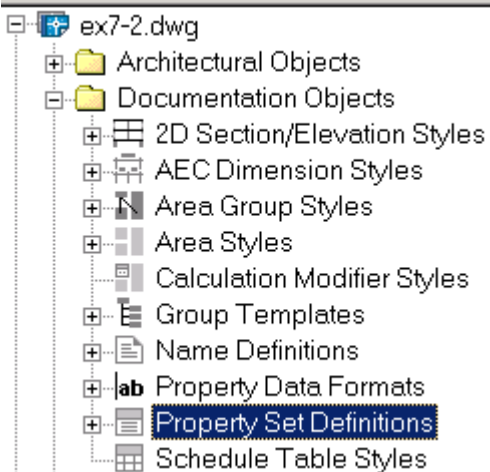
This exercise reviews the following concepts:

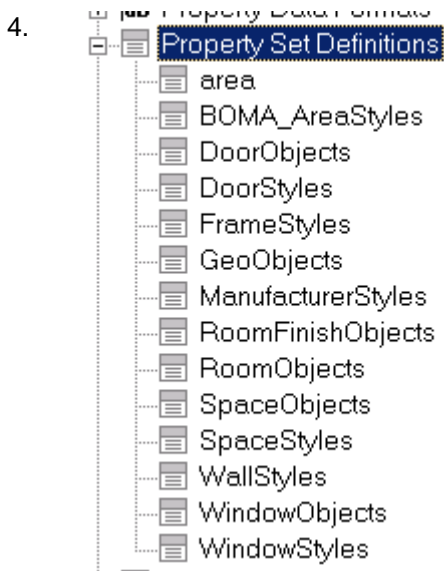
- Property Set Definitions
- Attributes
- Symbol Tags
- Multi-View Block Definitions

File: Window Tag.dwg, ex7-2.dwg
Estimated Time: 45 minutes

1. Open *ex7-2.dwg*.

2.  Go to **Format→Style Manager**.

3.  Expand the *Documentation Objects* folder.
Locate the *Property Set Definitions* category.



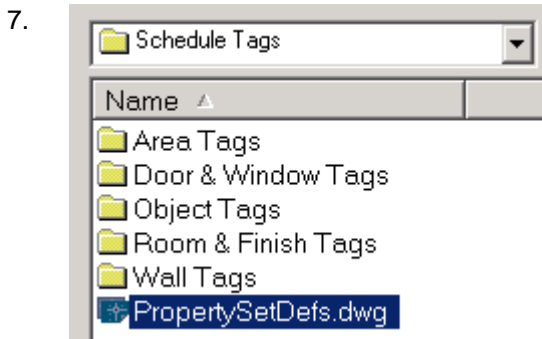
Expand the *Property Set Definitions* category.

We see that we currently do not have the property set definition for Openings in our drawing.

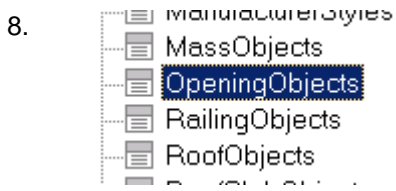
5. Select the **File Open** in the Style Manager toolbar.



Browse to the *Documents and Settings/All Users/Application Data/Autodesk/ADT 2005/enu/AEC Content/Imperial/Documentation/Schedule Tags* folder.

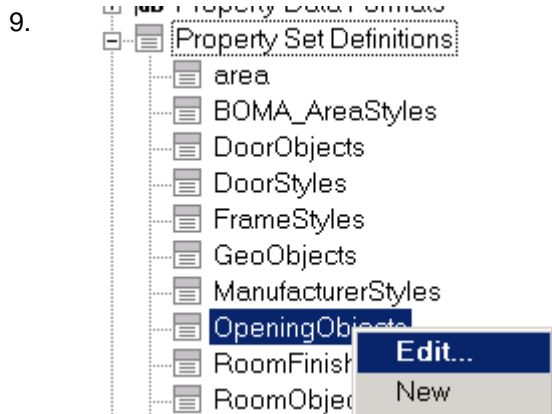


Locate the *PropertySetDefs.dwg* file and press **Open**.



We see that there is a Property Set Definition for **OpeningObjects**.

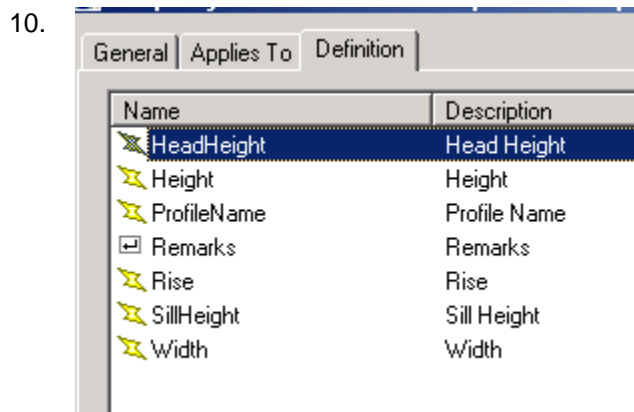
Copy and paste it into your drawing.



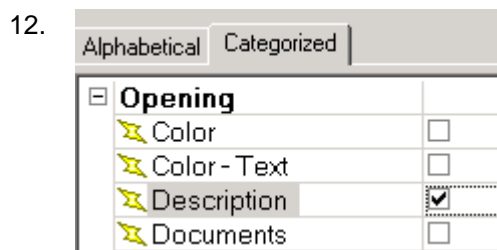
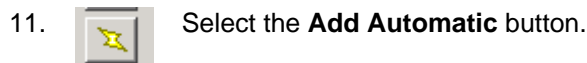
We now see the OpeningObjects in our drawing.

Highlight **OpeningObjects**.

Right click and select **Edit**.



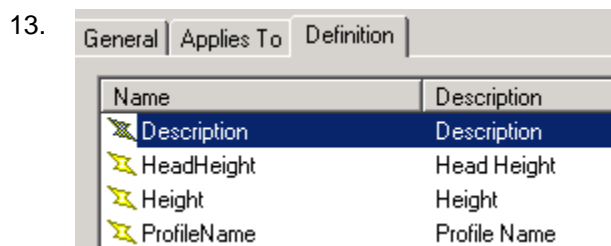
Select the **Definition** tab.



Select **Description** from the list.

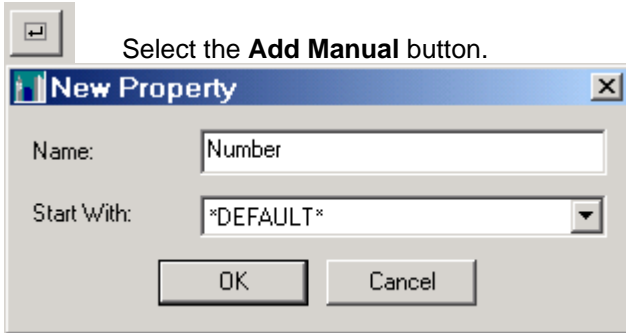
You can only select one property definition at a time.

Press **'OK'**.



Note Description is now in the list of Definitions.

14.



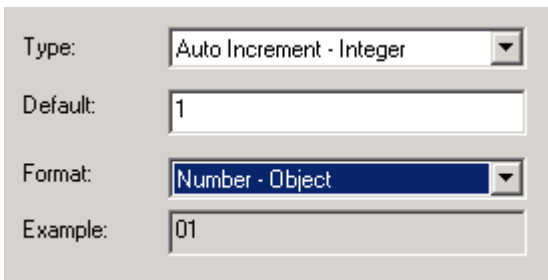
Select the **Add Manual** button.

15.

Type **Number** for the Name.

Press **OK**.

16.



For Description, type **Number**.

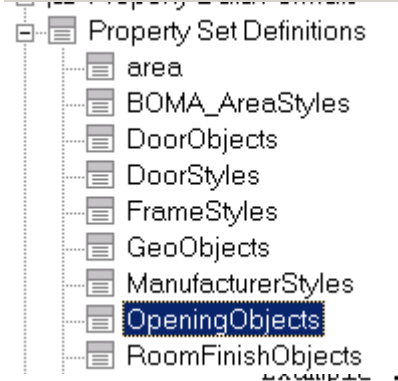
For Type, select **Auto Increment-Integer**.

For Default, type **1**.

For Format, select **Number-Object**.

Press **OK**.

17.



Highlight **OpeningObjects** in the left pane.

18.

```

** Property Definition :
      Name : Description
      Description : Description
      Automatic : True
      Data Type : Automatic
      Default :
      Format : Standard
      Example :

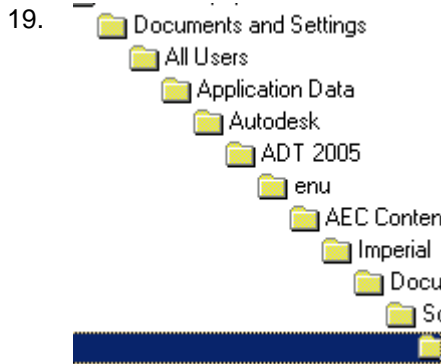
** Property Definition :
      Name : Number
      Description : Number
      Automatic : False
      Data Type : Auto Increment - Integer
      Default : 1
      Format : Number - Object
      Example : 01
    
```

The definitions you created are listed in the right pane.

With **OpeningObjects** highlighted, select **Apply** and **OK**.

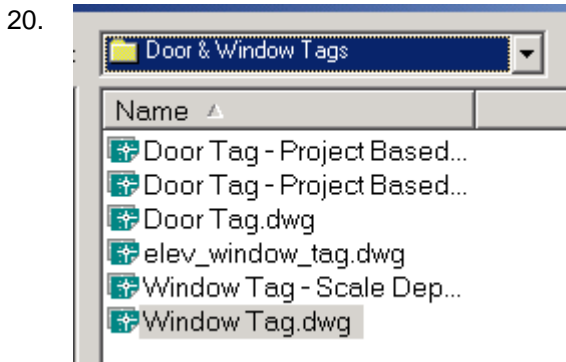


TIP: The Property Names are automatically listed in alphabetic order. So when you are defining the Name property, it automatically is placed in the correct location in the Property list.



Select the **Open file** tool.

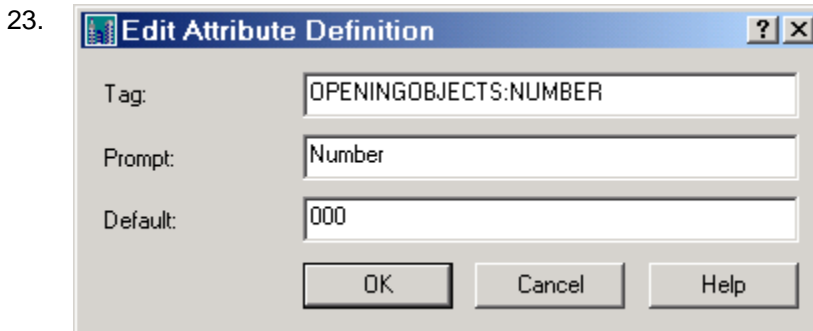
Browse to the *Documents and Settings/All Users/Application Data/Autodesk/ADT 2005/enu/AEC Content/Imperial/Documentation/Scheduling/Door & Window Tags*.



Locate the *Window Tag.dwg* file and press **Open**.

21. Save the file as *Opening Tag*.

22.  Explode the block.

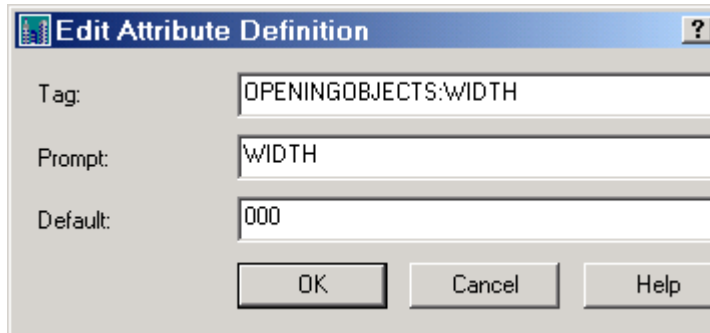


Double left click on the top attribute.

Change the tag to **OPENINGOBJECTS:NUMBER**.

Press **OK**.

24.



Double left click on the second attribute to edit.

Change the Tag to **OPENINGOBJECTS:WIDTH**.

Change the Prompt to **WIDTH**.

Press **OK**.

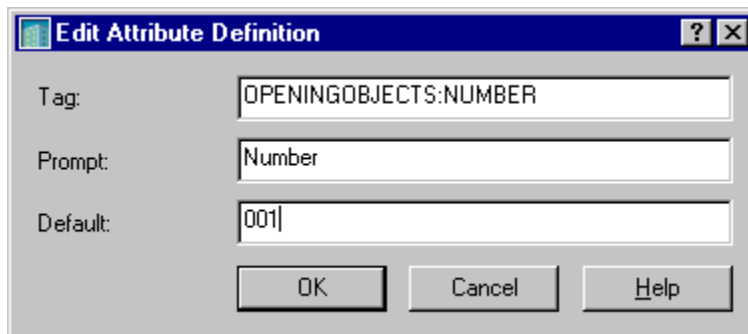


OPENINGOBJECTS:NUMBER
OPENINGOBJECTS:HEIGHT
OPENINGOBJECTS:WIDTH

25. Copy the second attribute over and edit to use the HEIGHT definition. The Height and Width attributes are invisible attributes. They will not normally be visible.



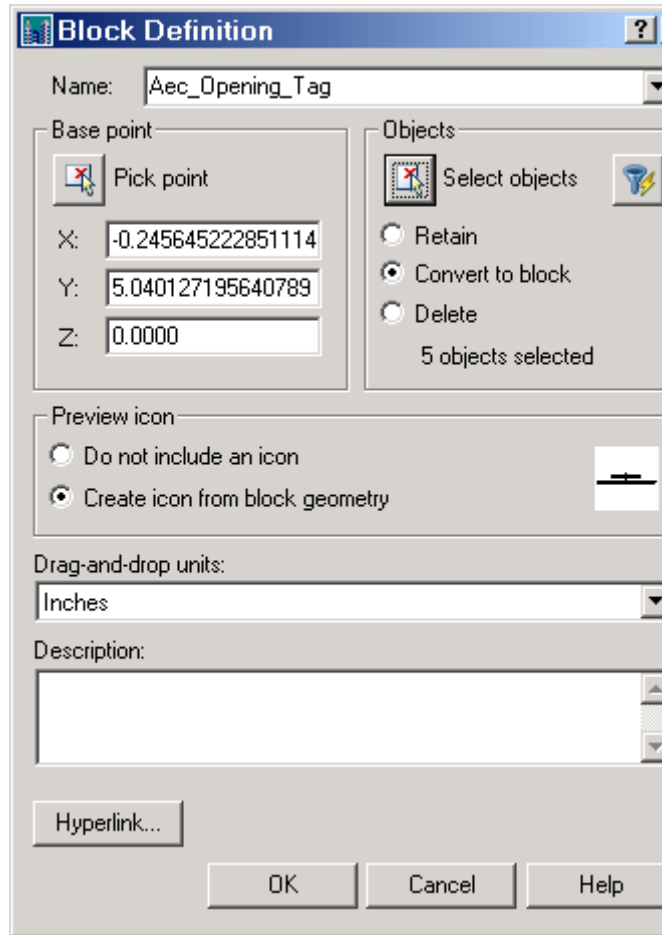
TIP: A quick way to change an attribute definition is to double click on the attribute to open the Edit Attribute Definition dialog.



Then just change the tag, prompt, and default.

26.  Start the **Make Block** command.

27.



Name your block *Aec_Opening_Tag*.

Pick the middle of the diamond as the base point.

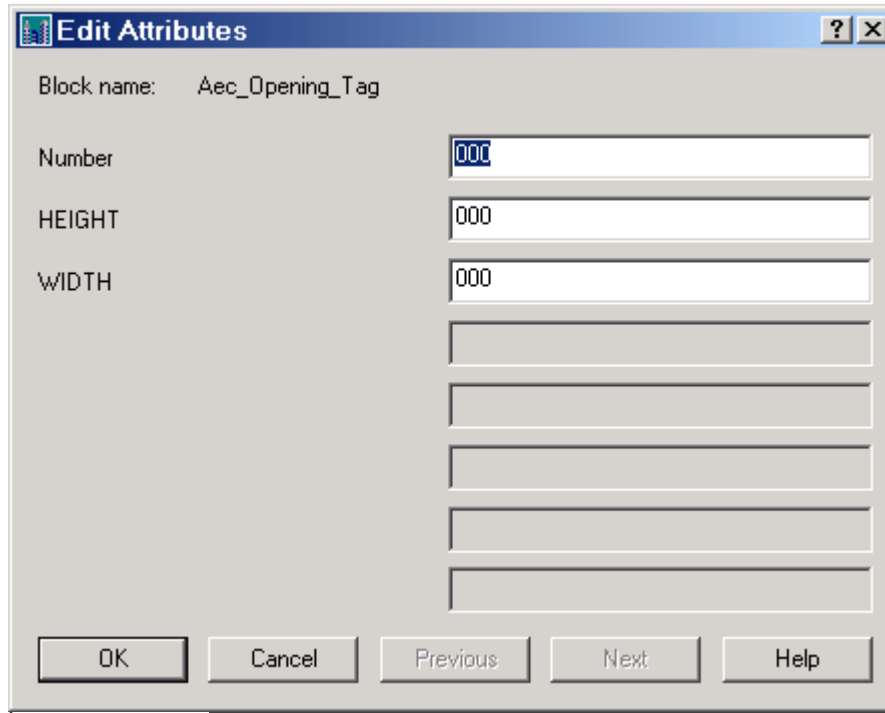
Select each object. The order you select the attributes will be the order they will appear in the attribute edit dialog.

Press **OK**.



TIP: The display of attributes is controlled by the system variable ATTDISPLAY. You can set this variable to NORMAL, ON, or OFF. Normal will display visible attributes. ON will display all attribute types, including invisible. OFF will make all attributes invisible.

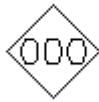
28.



The Edit Attribute dialog will appear.

Press **OK**.

29.

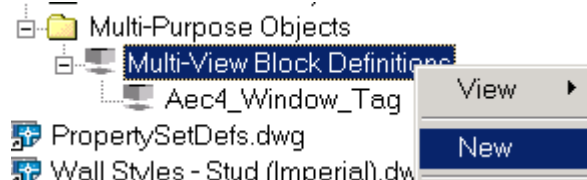


The block is created.
You can see all attributes by using the ATTDISPLAY command.



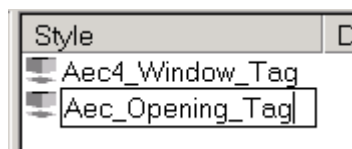
30. Go to **Format** → **Multi-View Block** → **Multi-View Block Definitions**

31.

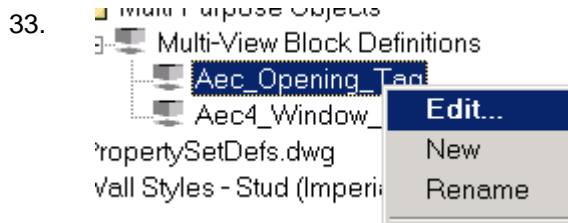


Highlight **Multi-View Block Definitions**.
Right click and select **New**.

32.

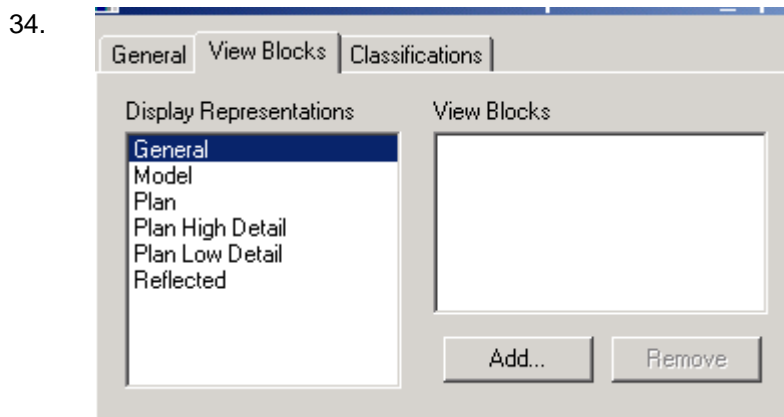


Name the M-V Block **Aec_Opening_Tag**.

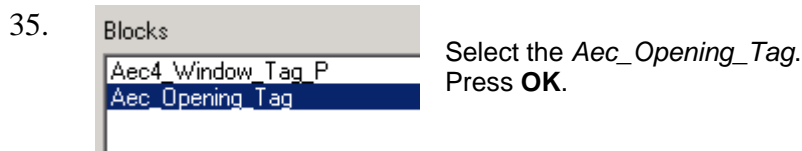


Highlight the *Aec_Opening_Tag*.

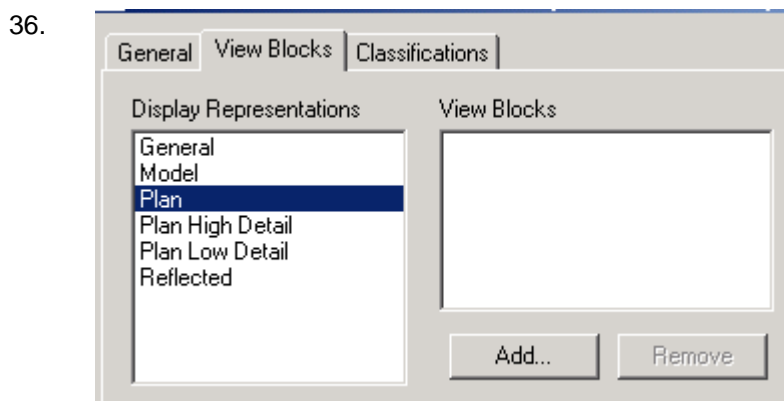
Right click and select **Edit**.



Select the View Blocks tab.
Highlight **General**.
Select **Add**.



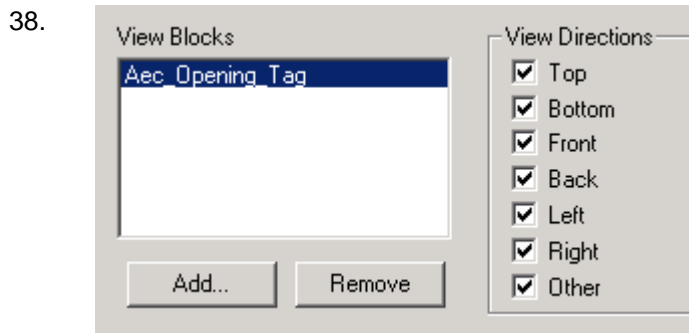
Select the *Aec_Opening_Tag*.
Press **OK**.



Highlight **Plan**.
Select **Add**.



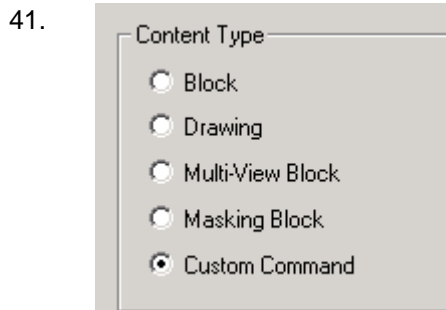
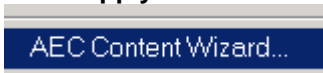
Select the *Aec_Opening_Tag*.
Press **OK**.



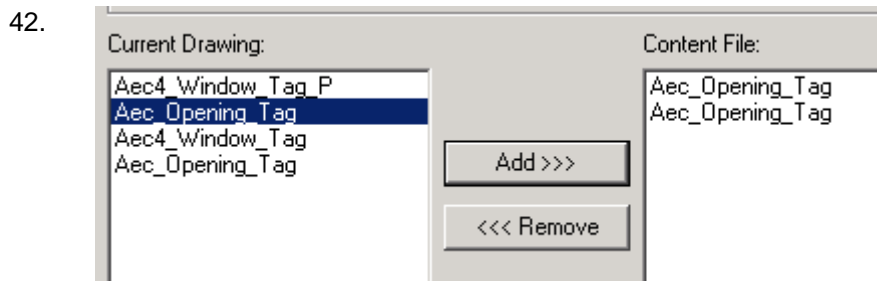
Press **OK** to close the dialog.

39. Press **Apply** and **OK** to close the Style Manager.

40. Go to **Format**→**AEC Content Wizard**.



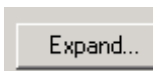
Enable **Custom Command**.



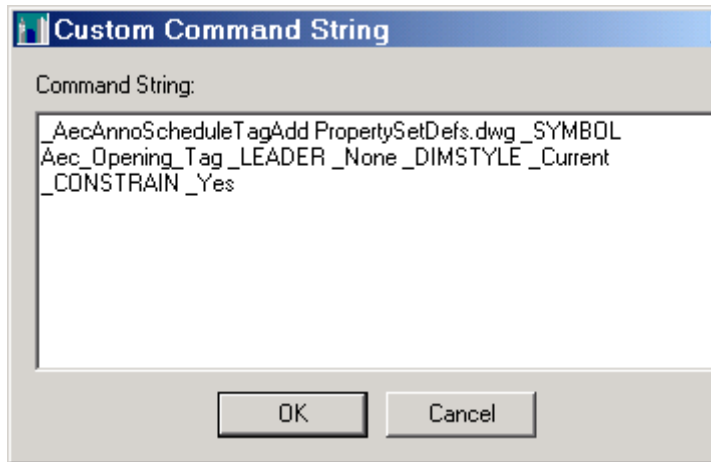
Remove the Window Tags from the Content File window.

Add the *Opening Tag*.

43. Select the **Expand** button.

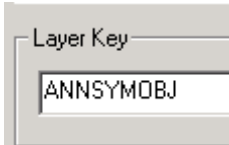


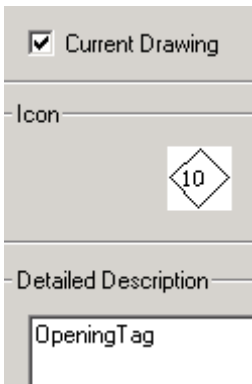
44.



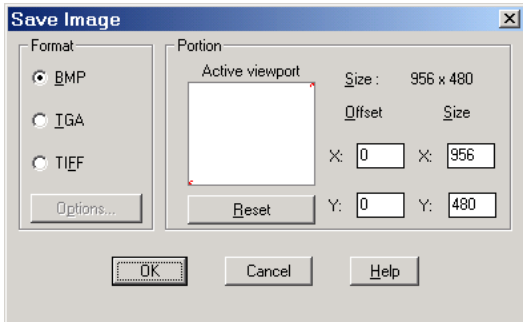
Replace the symbol with
Aec_Opening_Tag.

45. Press **Next**.

46.  Select **ANNSYMOBJ** for the Layer Key.
This will automatically place the block on the assigned layer.
Press **Next**.

47.  Enable **Current Drawing**.
Select the Default Icon button to reset to the current drawing.
Change the Detailed Description to **Opening Tag**.
Press **Finish**.

48. We need an image to use for our custom tool.
Zoom Extents.

49.  Type **SAVEIMG** on the command line.
Enable **BMP**.
Press **OK**.

50.  Save your image as *Opening Tag.bmp*.
Press **Save**.

51. Save your Opening Tag file and close.



TIP: Remember to set your display background to **WHITE** or your icon will have a black background when you access it through Design Center.

Exercise 7-4: Adding a Custom Tool to a Tool Palette

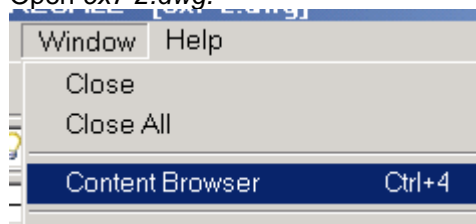
This exercise reviews the following concepts:

- Property Set Definitions
- Attributes
- Symbol Tags
- Multi-View Block Definitions

File: Opening Tag.dwg
Estimated Time: 20 minutes

1. Open ex7-2.dwg.

2.



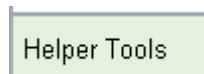
Go to **Window**→**Content Browser**.

3.



Select the **Stock Tool Catalog**.

4.



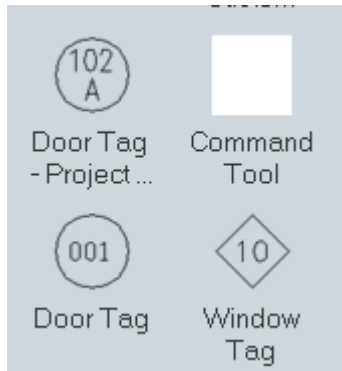
Select the **Helper Tools** category.

5.



Select the **Command Tool**.

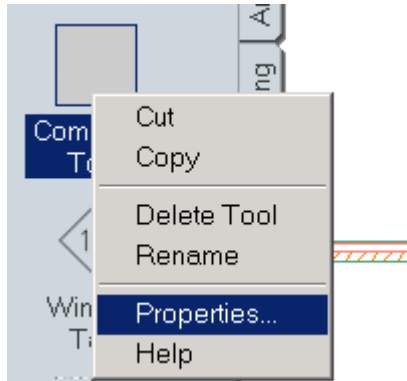
6.



Drag and drop onto the Scheduling palette.

7. Close the Content Browser.

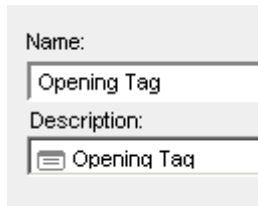
8.



Highlight the Command Tool.

Right click and select **Properties**.

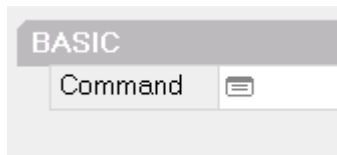
9.



Change the Name to **Opening Tag**.

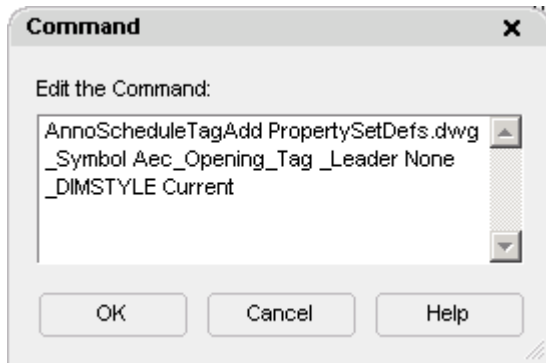
Change the Description to **Opening Tag**.

10.



Left pick in the Command field.

11.

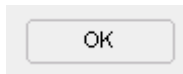


Enter in the command to place the tag.

Press **OK**.

Space Planning with ADT 2005 Excerpt
Creating a Custom Tag and Tool
Available from Schroff Development Corp www.sdcacad.com
Elise Moss

12.



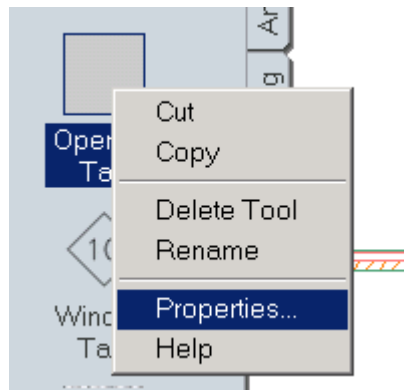
Press **OK** to close the dialog.

13.



Select the tool and place a tag on one of your openings.

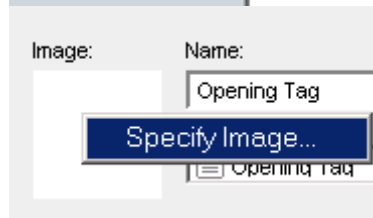
14.



Select the Opening Tool.

Right click and select **Properties**.

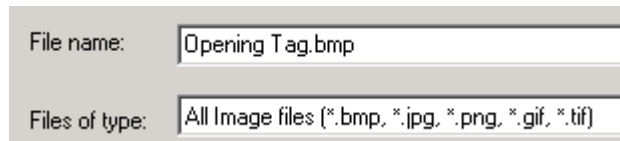
15.



Right click in the image rectangle.

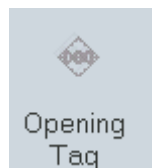
Select **Specify Image**.

16.



Locate the image you created.
Press **Open**.

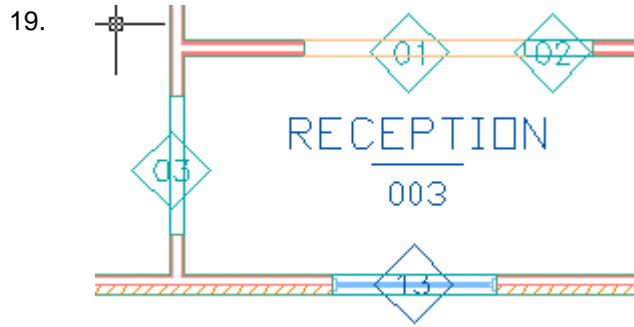
17.



The tool updates with the specified image.

18.

Place an opening tag on the remaining openings.



You should have a total of three opening tags placed.

20. Save as *ex7-3.dwg*.